



## IMPORTANT



Be Sure  
to Read this  
Manual  
Before Use



[www.universal-space.com](http://www.universal-space.com)

# Operation Manual

**WE ARE HERE TO ASSIST**  
**For parts and service**



**Have Questions? Contact us!**

**UNIS SERVICE CENTER**

Tel: 972-241-4263

Fax: 214-919-4918

Email: [service@unisusasupportcenter.com](mailto:service@unisusasupportcenter.com)

# CONTENT

IMPORTANT SAFETY INSTRUCTIONS.....	3
1. SPECIFICATIONS .....	5
2. CONTENTS OF THE ACCESSORY KIT .....	6
3. PART NAME.....	7
4. SET UP & INSTALLATION.....	8
5. HOW TO PLAY .....	12
6. GAME OPTION .....	13
7. TROUBLE SHOOTINGS .....	16
8. MAINTENANCE & INSPECTION .....	19
9. OVERALL CONSTRUCTION .....	27
10. WIRING DIAGRAM .....	59

Thank you for purchasing **Pin Setter**. We hope you enjoy the product.

This manual contains valuable information about how to operate and maintain your game machine properly and safely. It is intended for the owner and/or personnel in charge of product operation. Carefully read and understand the instructions.

If you need any help during installation and setup please utilize this manual and troubleshooting guide. If the product fails to function properly, *non-technical personnel should under no circumstance attempt to service the machine*. Contact your distributor or manufacturer for help.

Before use, please read **IMPORTANT SAFETY INSTRUCTIONS**.

## IMPORTANT SAFETY INSTRUCTIONS

**To ensure the safe usage of this product, carefully read and understand these instructions before operating your game.**

**Save these instructions for future reference.**

Use this product only as described in this manual. Other uses not recommended may cause fire, electric shock or personal injury. Unplug the game from the outlet when not in use, when moving from one location to another, and before cleaning/servicing.

Explanations which require special attention are indicated by signs of warning. Depending on the potential hazardous degree, the terms: **NOTE**, **NOTICE**, and **WARNING** are used.

**NOTE:** A NOTE indicates useful hints or information about product usage.

**NOTICE:** A NOTICE indicates potential damage to product and how to avoid the problem.

**WARNING:** A WARNING indicates a potential for product damage or serious personal injury.

It is important to understand the meaning of the following HAZARD SIGNS before continuing:

### High Voltage and Shock Hazard:

High voltage can cause electric shock.  
Turn off/unplug power before servicing.



### High Temperature Hazard:

This part may cause scalding.  
Do not touch. Surface may be hot.



### No Touching Hazard:

This part may be hot or can cause electric shock.  
Do not touch.



Use the following safety guidelines to help ensure your own personal safety and to help protect your equipment and surrounding environment from potential damage.



**This product is an indoor game machine. Do not install outdoors.**

Avoid installing in the following places to prevent fire, electric shock, injury and/or machine malfunctioning:

- Places subject to rain/moisture, or places subject to high humidity.
- Places subject to direct sunlight, or places subject to extremely hot or cold temperatures to ensure that it is used within the specified operating range.
- Places where inflammable gas may be present or in the vicinity of highly inflammable/volatile chemicals or items that can easily catch fire.
- On unstable or sloped surfaces. The machine may topple or cause unforeseen accidents.
- Vicinity of fire exits, fire extinguishers etc that may block/prevent safety measures.

**IMPORTANT NOTE:**

**ALL REPAIRS MUST BE DONE TO ORIGINAL MANUFACTURER SPECIFICATIONS. FAILURE TO DO SO VOID ALL WARRANTIES AND OPERATOR ASSUMES ALL RISKS.**

Note: The contents of this manual may be updated without notice.

# 1. SPECIFICATIONS

Rated power supply: AC110V 50/60Hz;

Min. Power consumption: 390W

Max. Power consumption: 470W

Dimension: W80.53×D34.17×H110.08 in


W2045×D868×H2796 mm

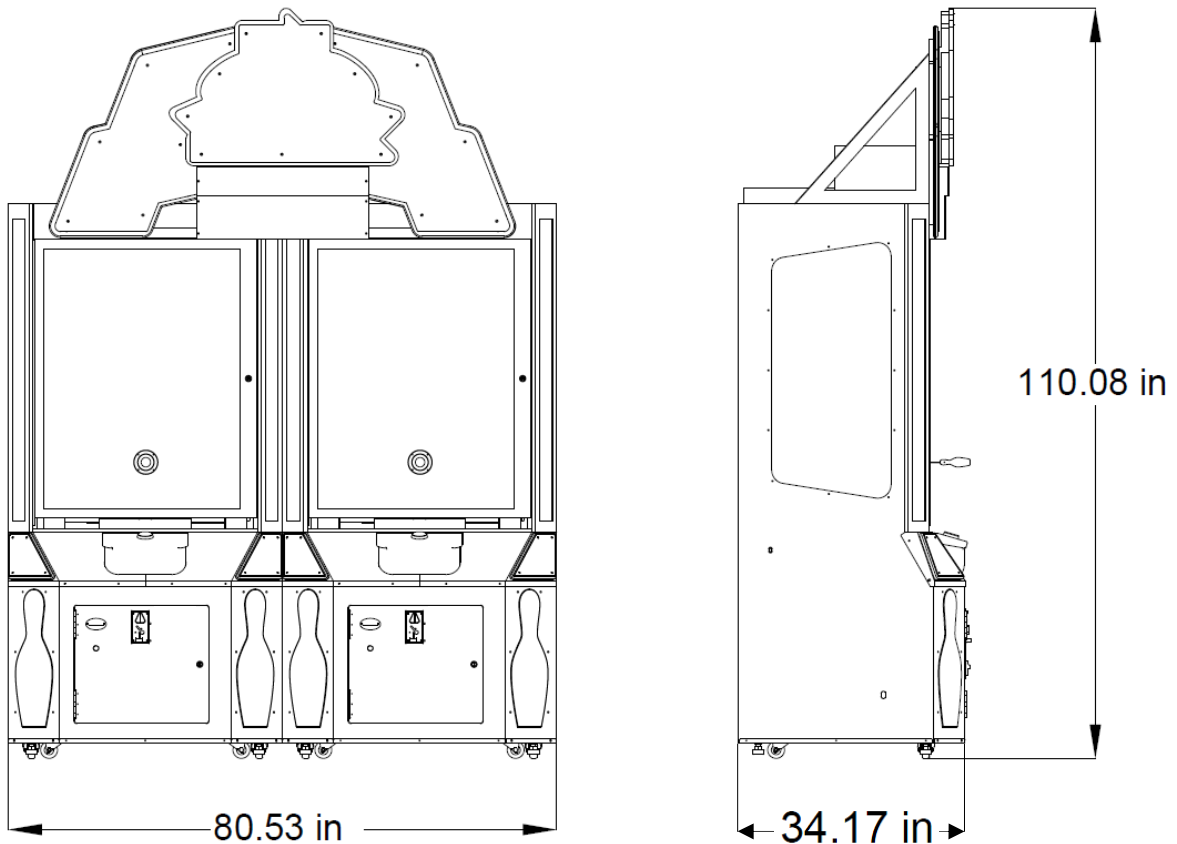
Weight: Approximately 1212.5 lb

550kg

Part No: P139

Model No: C-522

 **NOTICE:** After turning off the game, please wait at least 1 minute before restarting again.



**Note:** Game specifications are subject to change without notice.

## 2. CONTENTS OF THE ACCESSORY KIT

Open the package and make sure all the items are included:

### 1. Following accessories

No.	Part No.	Name	Picture	Qty
1	P139-801-000	Key		2
2	P139-802-000	Key		2
3	P139-803-000	Fuse		2
4	P139-804-000	Power cord		2
5	P139-805-000	Manual		1
6	P139-134-000	Rod		2
7	P139-463-000	String		3
8	P139-148-000	Bowling pin bottom assy.(normal)		2
9	P139-152-000	Pin bottom assy.(bronze)		2
10	P139-154-000	Pin bottom assy.(aluminum)		2
11	P139-467-000	Nylon wiring		2

**NOTE:** Part models are subject to change without notice.

### 3. PART NAME

#### Key Components





## 4. SET UP & INSTALLATION

### ⚠ NOTICE

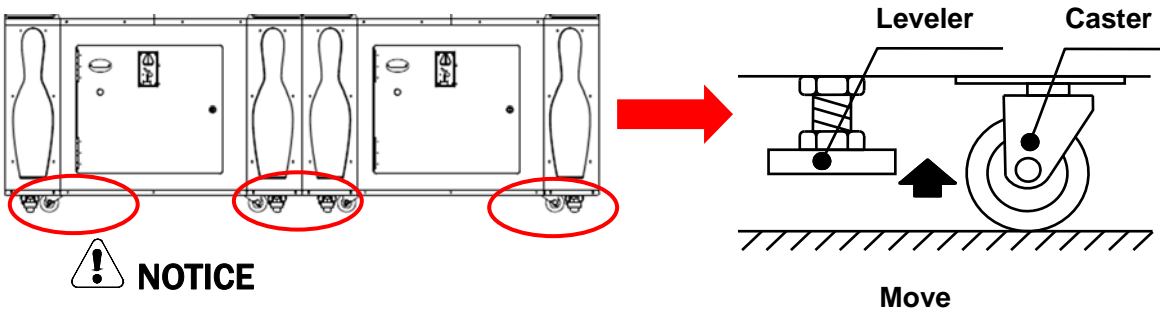
We do not recommend using power tools as they may cause damage.

⚠ This product is an indoor game machine. Do not install outdoors.

- Refer to IMPORTANT SAFETY INSTRUCTIONS (Pg. 3) for places to avoid
- Place the unit on a dry level surface
- Ventilation openings in the back of the unit must not be obstructed by objects or by wall.

### 4.1 Transporting the Game

If you need to move the game, adjust the levelers back to an “up” position.



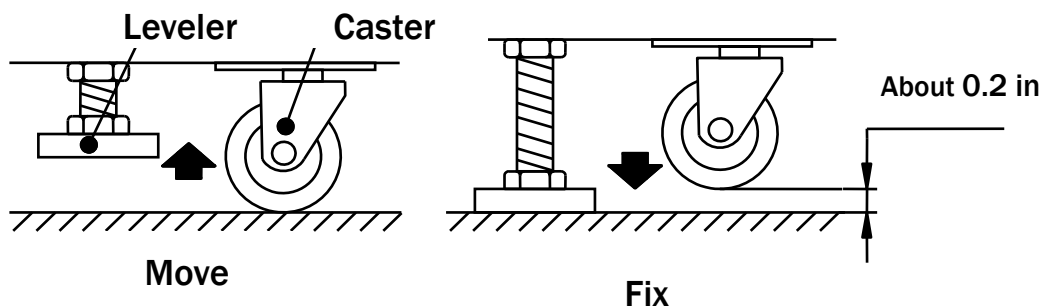
### ⚠ NOTICE

- Be careful not to damage the machine during transport.
- Always unplug the game before moving.
- Keep the machine in upright position during transport.
- For longer distance transport, package the game properly to prevent damages.

### 4.2 Level Adjustment

Install this machine on a flat surface. Adjust levers to lift casters off the ground to level the game. If the game is installed on an unsuitable floor, it could cause game malfunction.

To secure the game, adjust the Leveler down until it touches the floor, lifting the casters off the ground by 0.2 in. Repeat the same for all levelers.



### ⚠ NOTICE

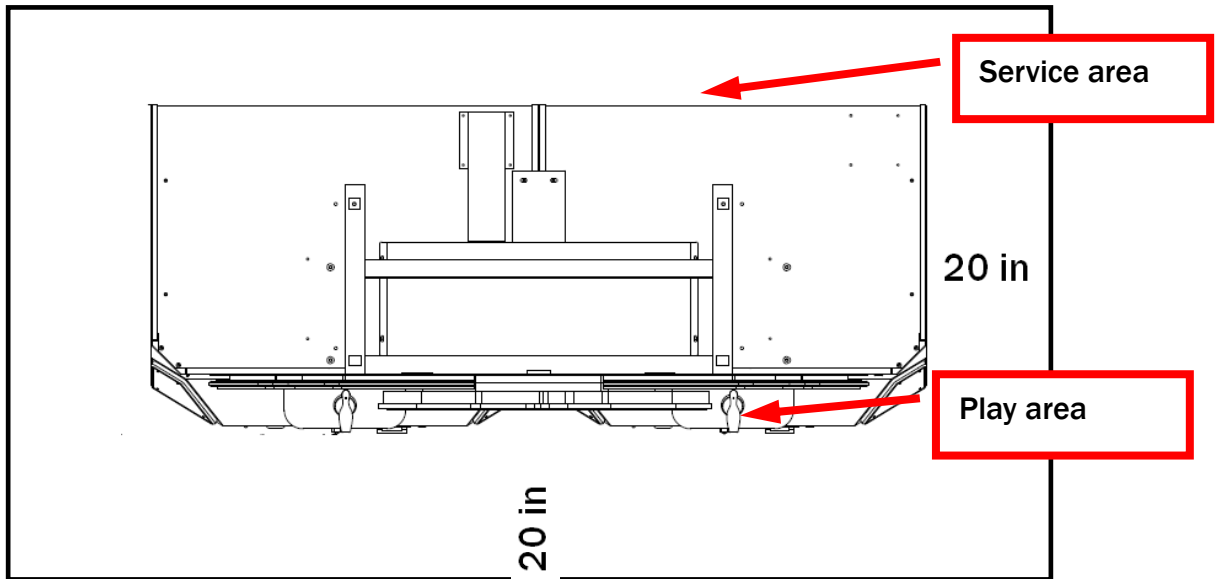
Make sure the machine is level.

### 4.3 Play Zone

This machine requires space for playing and for maintenance as shown below.

Leave space around the game upon installation:

Service area: 20 in





#### NOTICE

Your unit must be leveled to operate properly.

### 4.4 Marquee Installation (This process requires assistance.)

Before processing with assembly assure you have the following tools.

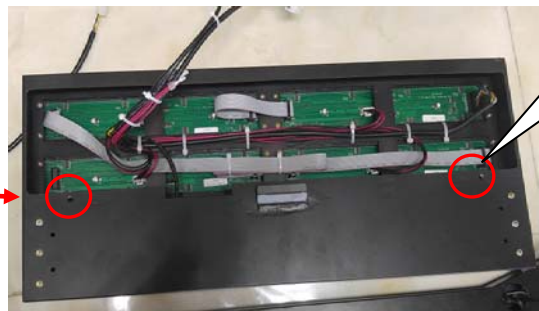
No.	Name	Picture
1	Phillips screwdriver	
2	Ladder	

**Step 1** Stand on the ladder and place the marquee bracket on the top of the cabinet and fix it with four screws as picture shown.



2 screws one side

**Step 2** Place the MEGA BONUS marquee assy. on bracket and fix it with two screws as picture shown. Please connect the plugs.



**Step 3** Place the LOGO marquee assy. on the bracket and fix it with four screws as picture shown. Please connect the plug.



**Step 4** Place the L&R stripe assy. on the bracket and fix it with six screws as picture shown.  
Please connect the plugs.



3 screws for one side

## 5. HOW TO PLAY

5.1 Insert coins.

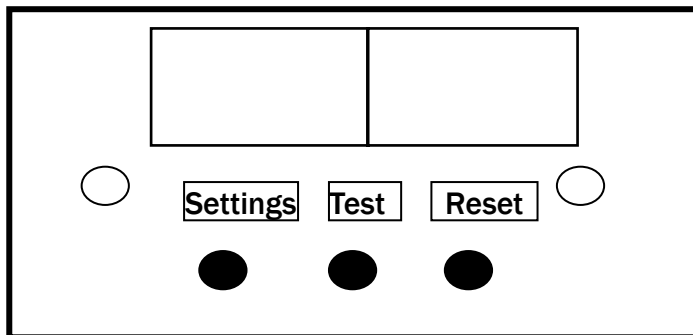
5.2 Press the start button to begin

5.3 Use the Rod make the Pin stand up within game time. Less time you spend, more tickets you will get.



## 6. GAME OPTION

### 6.1 Adjustment button instruction



Open the coin door and there is a meter panel. Press Settings button to enter into the setting menu.

### 6.2 Setting menu

#### 6.2.1 Main menu

Basic Setting
Customized Setting
Input Test
Output Test
Game Reset
Date/Time Setting
Language/语言
Bookkeeping
Daily Record
Sensor Frame Detection
About this game
Back to game

#### 6.2.2 Basic Setting

Free Play	OFF/ON
Tickets Out	OFF/ON
Out of Tickets	Store in memory/Call Attendant
Demo Music	OFF/ON
Memory Save	OFF/ON
Volume	
PayOut ON/OFF	
Payout ticket per coin	
Game Time	30/45/60/75/100/120/160
Coins Per Game	1-5
Pay Mode	Insert Coins/Swipe Card
Back&Save	
Back	

#### 6.2.3 Customized Setting

Divided by 2	OFF/ON
Fixed ticket mode	OFF/ON
Fixed ticket	0-300
Second try	OFF/ON
Mega bonus mode	OFF/ON
Mega Bonus	300-9999
Level 1 tickets	300-9999
Mega Bonus time (s)	
Level 1 time (s)	
Mercy tickets	0-10
Dispensing type	Ticket/Coupon
Speed Level	Fast/Medium/Slow

Back&Save	
Back	

### 6.2.4 Input Test

Insert coin	OFF/ON
Front window	OFF/ON
Go button	OFF/ON
Rod laying down	OFF/ON
Rod pulling up	OFF/ON
Pushing rod push over	OFF/ON
Pushing rod stand	OFF/ON
Back	

### 6.2.5 Output Test

Ticket driver
Card reader inhibit
Card reader enable
Two side light bar
Go button light
Turntable light
Bonus light
Mega Bonus light
String mechanism
Pushing rod mechanism
Turntable
Mega Bonus light

### 6.2.6 Game Reset

Factory Restore	YES/NO
Reset Basic Settings	YES/NO
Reset Customized Settings	YES/NO
Clear All Records	YES/NO
Clear Owed Tickets	YES/NO
Clear Unused Coin	YES/NO
Back	

### 6.2.7 Date/Time Setting

Year	2010-2100
Month	1-12
Day	1-31
Hour(24)	0-23
Minute	0-59
Second	0-59
Go Back & Save	
Back	

### 6.2.8 About This Game

CPU
Motherboard
Disk Drive
Memory
Display Adapter
Monitor
Screen
Version
Press the Test Button to Go Back

### 6.2.9 Bookkeeping

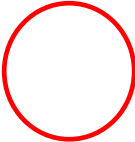
Player	Coins	Tickets	Payout
1	0	0	0.00
Back			

## 6.2.10 Daily Record

Date	Weekday	RunTime	Coins	Tickets	Payout
2014-06-06	Fri	00:01	0	0	0.00

Prev. Page  
Next Page  
Clear  
Back

## 6.2.11 Calibrate the detecting area



Pin is set: No  
Detecting time:1.5

**Operation tips**

**Calibration: Reset button**

**Back: Settings button**






## 7. TROUBLESHOOTING

### 7.1 Common Problem

Please confirm that all connectors fit tightly.

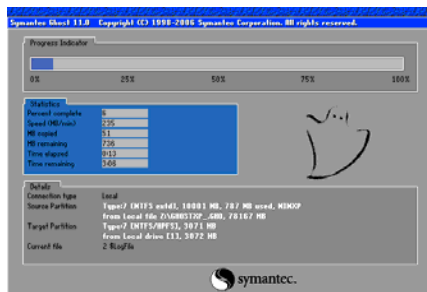
Symptom	Possible Cause	Recommended action
Game will not start	Frame assembly connector is loose.	Check connector.
	Frame assembly fault	Contact with UNIS Service.
Power off	Circuit protector make power SW in off state.	Turn on power SW again. If appeared again and again, machine has anomaly. Please contact with UNIS Service.
Card reader not working	The connector is loose.	Check connector.
	Card reader fault.	Check with card reader manufacturer.
No ticket dispensing	Out of ticket.	Add ticket and press reset button
	Ticket jamming.	Remove the jammed tickets and press reset button.
	The connector is loose.	Plug the connector tightly.
No sound	Low volume	Raise the volume.
	Connector loose.	Check connector.
	Speaker fault.	Check speaker.
	POT installation error.	Install POT correctly.
	POT fault.	Change POT.
	Audio cable problem.	Reconnect the audio cable or change it.
	PC crash.	Restart or system recovery.
Driver problem	Restart the audio driver.	
Display black screen	Check connectors.	Plug in connector tightly
	Display fault.	Utilize another source such as a PC to verify if the display is operational.
	RAM is loose.	Remove and reinsert RAM.
Display blue screen	PC power cord is loose	Check PC power cord whether is loose.
	VGA signal cable is loose.	Check VGA cable
	PC video card is loose.	Reseat video card.
	“0X000000A” code appears. Conflict between computer drive and software.	Contact service

If you see following error signs showing on the display, please try the recommended action.

Display	Possible Cause	Recommended action
 	The connection part of the IO board and PC are loose.	Check and reconnect the loose ports of the PC or IO board.
	USB cable quality problem	Change the USB cable after checking the connection between IO board and PC.
	USB cable became loose during transportation.	Check and reconnect the loose cables of the PC or IO board.
	IO board is faulty.	Reboot the game after checking USB connection and USB cable problem, if the problem remains unresolved, please call the service department for assistance.
	Out of ticket.	Refill ticket
	Loose connection of the ticket dispenser's cables.	Check and reconnect the loose cables to the ticket dispenser.
	Ticket dispenser is faulty.	Change the ticket dispenser.
	Ticket jam.	Remove jammed tickets.

## 7.2 System Recovery Operation **(NOTE: Do not disconnect power during this process.)**

1. Turn off the game. Remove recovery USB from the machine. (Note: This process may take up to 60 minutes) Insert the memory stick into the USB port at the back of the computer.
2. Restart PC to enter the system recovery screen as shown.



3. The game will automatically start recovery.
4. Once system recovery is partially finished (as shown below), and the ICON appears, remove the USB flash drive from the computer. The game will continue the install process.

OK to remove the USB.



5. Assure that the recovery USB has been properly secured for future use.



**WARNING:** the USB flash drive should only be used to fix software errors. Using it for other purposes may cause unexpected results and damages.

## 8. MAINTENANCE & INSPECTION

### 8.1 Safety Check

Check the points listed before operating the machine. These checks are necessary for safe machine operation:

1. Test game before operation each day.
2. Conduct monthly routine checks of game components to ensure good working condition
3. Check the machine regularly for dust and clean when necessary.

**Note:** Parts and components require preventative maintenance to maintain proper operation.

### 8.2 Handling Precautions

When installing or inspecting the machine, be very careful of the following points and pay attention to ensure that the player can enjoy the game safely.





Non-compliance with the following points or inappropriate handling running counter to the cautionary matters herein stated can cause personal injury or damage to the machine

#### ! NOTICE

We do not recommend using power tools as they may cause damage.



### 8.3 Parts replacement

Before processing with assembly assure you have the following tools.

No.	Name	Picture	Use for
1	Phillips screwdriver		8.3.1 Changing the pushing rod nylon wiring. & 8.3.3 Changing the Bowling pin bottom assy.
2	Wrench		8.3.2 Changing the turntable assy.
3	L type wrench		8.3.3 Changing the Bowling pin bottom assy. & 8.3.5 Changing the rod assy.
4	Circlip pliers		8.3.3 Changing the Bowling pin bottom assy.

### 8.3.1 Changing the pushing rod nylon wiring.

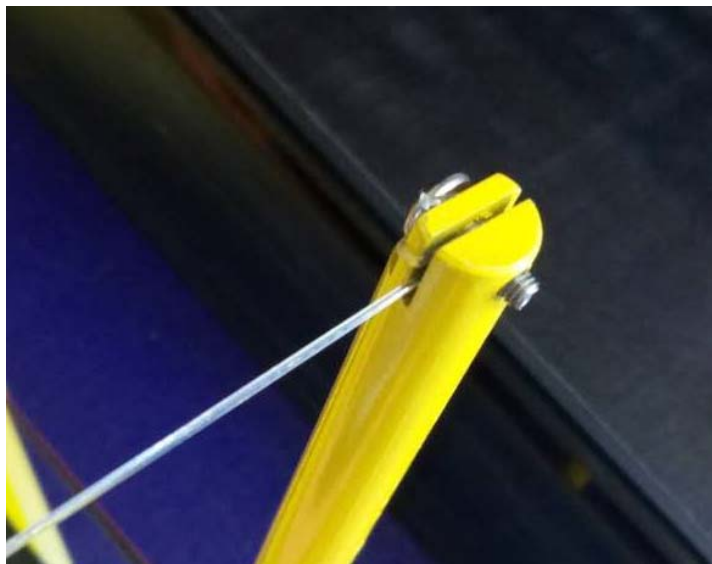
Before processing with assembly assure you have the following tool and part.

No	Name	Picture
1	Phillips screwdriver	
2	Nylon wiring	

**Step 1** Tie a knot on one side of the Nylon wiring and guide it through two holes of the pushing rods as red arrow indicated.


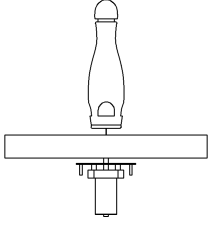


**Step 2** Wrap around and tighten the nylon wiring as red area indicated. Cut the unnecessary part.

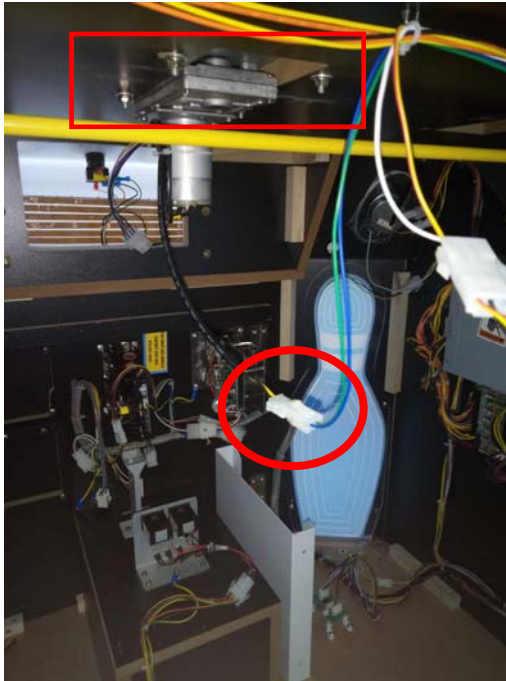


### 8.3.2 Changing the turntable assy.

Before processing with assembly assure you have the following tool and part.






No	Name	Picture
1	Wrench	
2	Turntable assy.	

**Step 1** Power off the game. Unplug this plug and loosen four screws in red area. Then, take out the whole turntable assy.



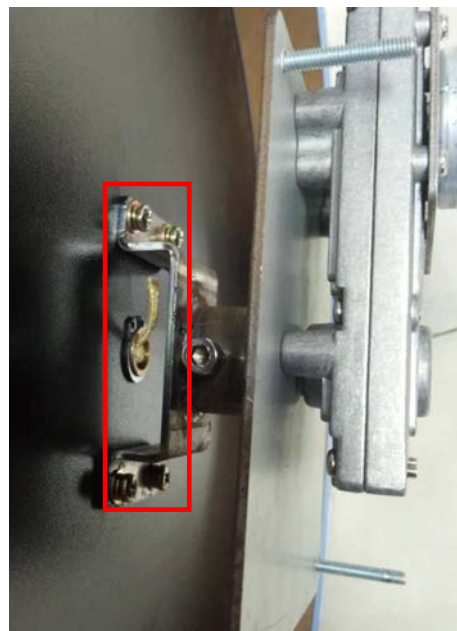
### 8.3.3 Changing the Bowling pin bottom assy.

Before processing with assembly assure you have the following tools and part.

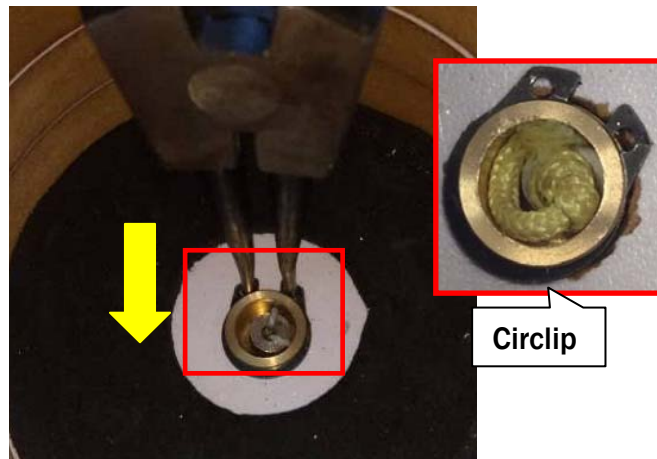
No.	Name	Picture
1	Phillips screwdriver	
2	L type wrench	
3	Circlip pliers	
4	Bowling pin bottom assy.(normal)	
Alternative	Bowling pin bottom assy.(heavy)	

**Step 1** Power off the game. Loosen the screw in red area. Then, take out the motor.

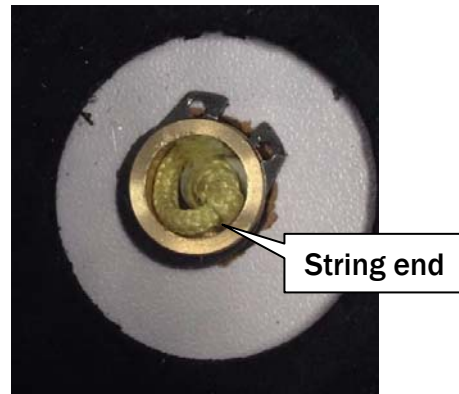
**Step 2** Loosen the four screws in red area. Then, take out the motor mounting bracket.



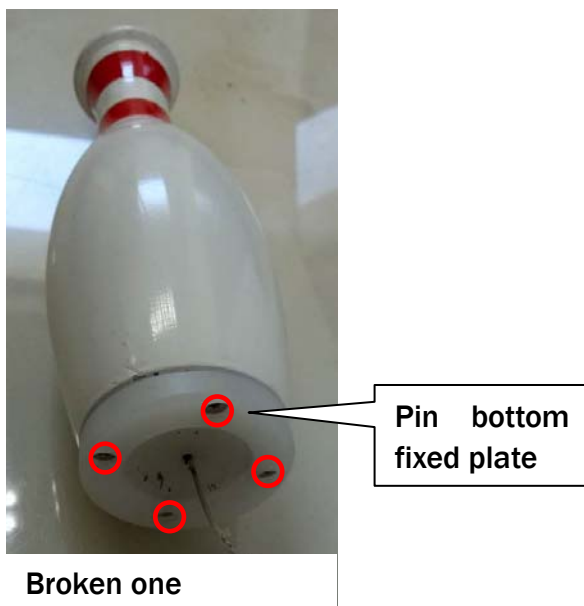
**Step 3** Use the pliers to remove the circlip. Then, follow the direction of yellow arrow, slightly push the red area part and remove it.



**Step 4** Install the Bowling pin bottom assy. Make sure it will be installed in place and fix with the washer. Please notice that, there should be no string end exposed. Same installation for Bowling pin bottom assy.(heavy).




**Step 5** Remove the screws (four screws) at the bottom of the pin, remove the old Pin bottom fixed plate. Connect the pin with the new Pin bottom fixed plate





### 8.3.4 Making the Bowling pin bottom assy.

If you already get this part and the problem happens again, please replace the string.

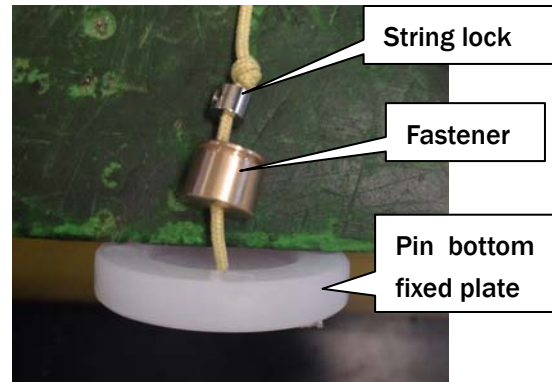
No	Name	Picture
1	Rope	

**Step 1** Disassemble the Bowling pin bottom assy.

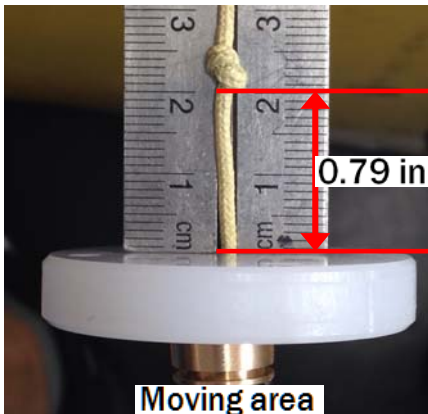


Pin bottom connected part

**Step 2** Use the new string to bunch the parts together as picture.



**Step 2** Follow instruction and tie the knots. (Figure-eight knot)



How to tie the knots? (Figure-eight knot)



Cross the string



Make the string into "8" shape





Pull the end of the string into the first circle.



Tightening the knot.

### 8.3.5 Changing the rod assy.

If the rod broke, please replace it. Before processing with assembly assure you have the following tool and part.

No	Name	Picture
1	L type wrench	
2	Rod	

**Step 1** Use the wrench to loosen two screws on the handle as arrow indicated.




**Step 2** Loosen the nut of the yellow rope and install the new rod.



**Step 3** The length of the rope should be 33.47-35.44(in).



### 8.3.6 Changing the ring assy.

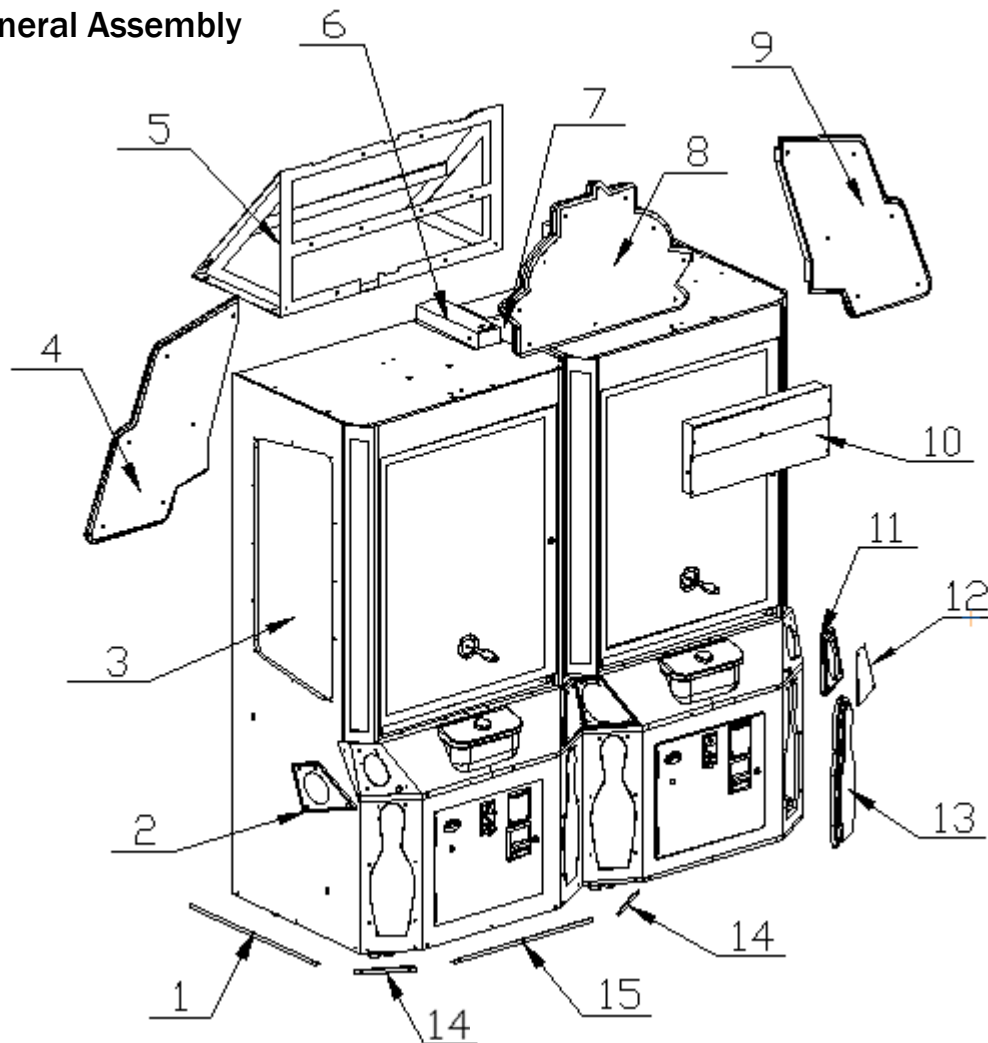
No.	Name	Picture
1	Ring assy. (normal)	
2	Ring	

Loosen the spring ring as arrow indicated, and change into the new ring.

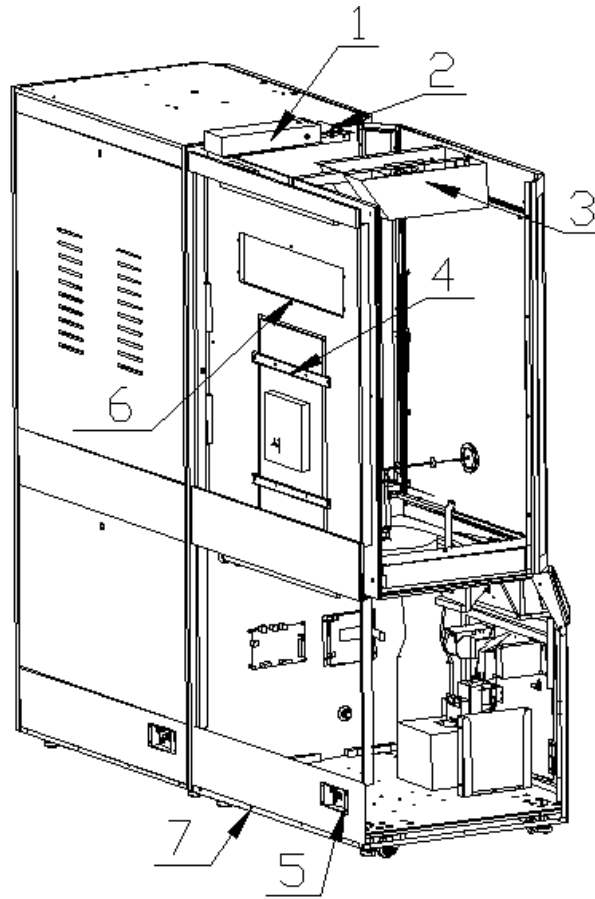


## 9. OVERALL CONSTRUCTION

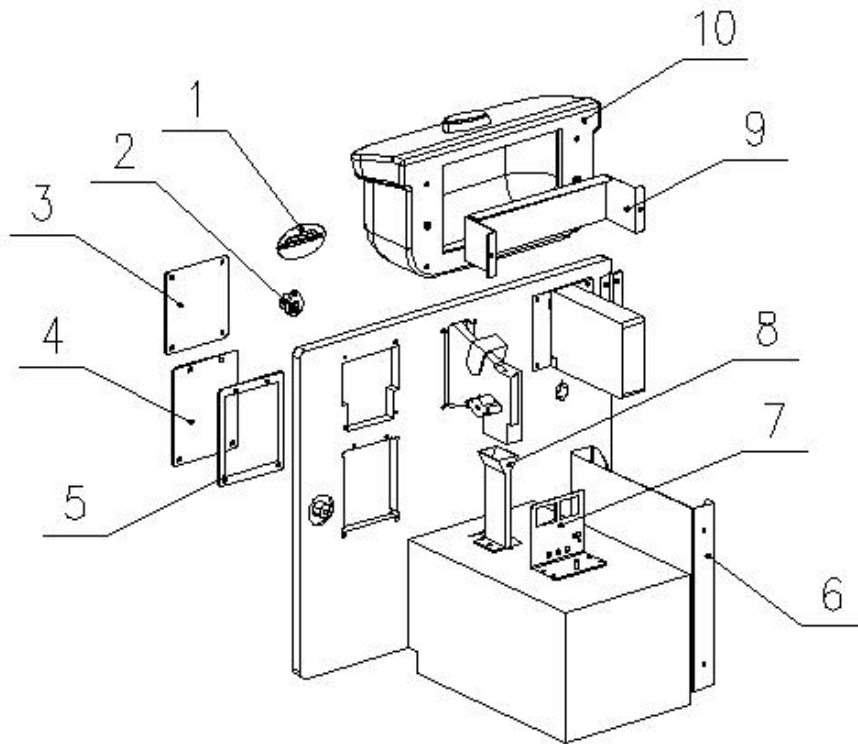
### 9.1 General Assembly



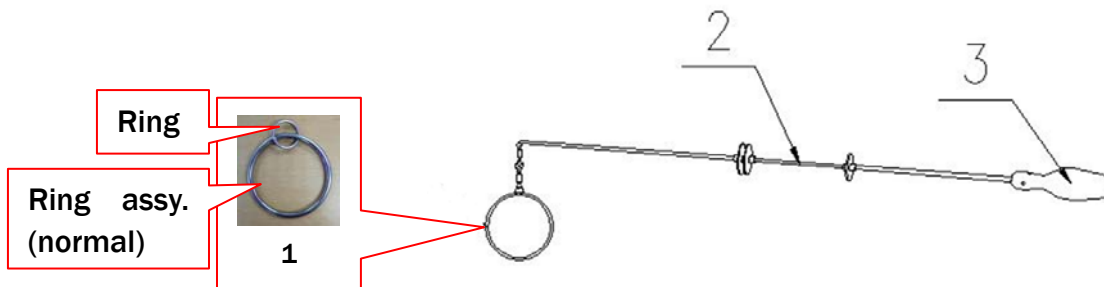
No.	Part No.	Code No.	Name	Qty
1	P139-117-000	20221701A011	L&R side banding	2
2	P139-107-000	20621701A002	L speaker plastic	2
3	P139-138-000	20621701A030	L&R side window	4
4	P139-006-000	29921701A011	L marquee assy.	1
5	P139-142-000	20221701A045	Marquee mounting bracket	1
6	P139-143-000	20221701A042	Wiring cover plate	1
7	P139-140-000	20221701A021	Connecting plate	1
8	P139-007-000	29921701A009	Logo Marquee assy.	1
9	P139-005-000	29921701A012	R marquee assy.	1
10	P139-004-000	29921701A013	Display assy.	1
11	P139-122-000	20621701A003	R speaker plastic	2
12	P139-108-000	20221701A050	Speaker net	4
13	P139-722-000	20521701A002	Bottom plastic decal	4
14	P139-106-000	20221701A003	Side banding	2
15	P139-130-000	20221701A018	Front side banding	2



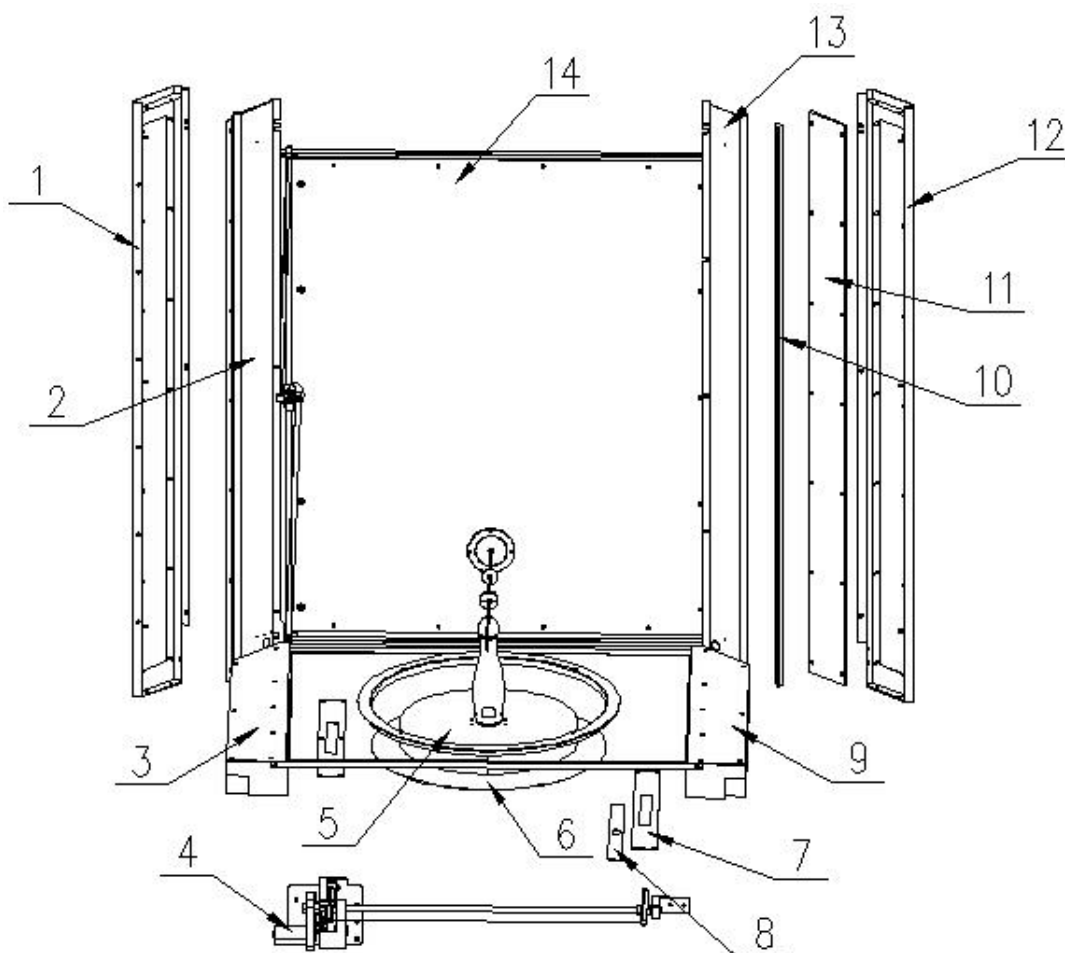
No.	Part No.	Code No.	Name	Qty
1	P139-143-000	20221701A042	Wiring cover plate	1
2	P139-140-000	20221701A021	Connecting plate	1
3	P139-010-000	29921701A015	String rolling assy.	2
4	P139-127-000	20221701A039	Display mounting plate	4
5	P139-198-000	26000042000A	Wiring box	2
6	P139-128-000	20221701A017	Display tube mounting plate	2
7	P139-139-000	20221701A020	Back side banding	2



No.	Part No.	Code No.	Name	QTY
1	P139-200-000	26000051000	Ticket cover	2
2	P139-203-000	26000065000	Out of ticket light cover	2
3	P139-119-000	20221701A012	Ticket cover plate	2
4	P139-120-000	20221701A013	DBV front plate	2
5	P139-121-000	20221701A014	DBV back plate	2
6	P139-194-000	26000006000	Ticket box	2
7	P139-199-000	26000044000	Wiring box bracket	2
8	P139-129-000	20221701A040	Coin slot	2
9	P139-131-000	20621701A026	Control panel light bracket	2
10	P139-118-000	20621701A020	Control panel	2

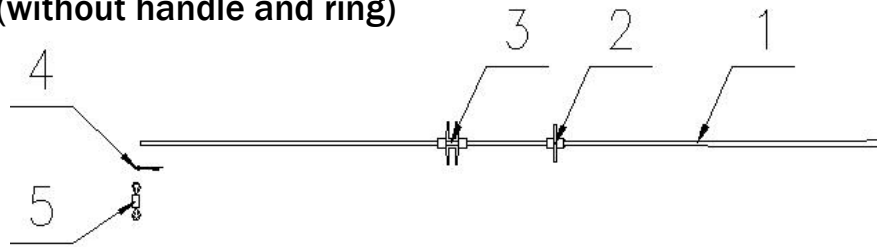


No.	Part No.	Code No.	Name	QTY
1	P139-126-000	20221701A035	Ring assy. (normal)	2
	P139-458-000	25108040305	Ring	2
2	P139-134-000	20621701A017	Rod assy.	2
3	P139-133-000	20221701A047	Rod handle	2



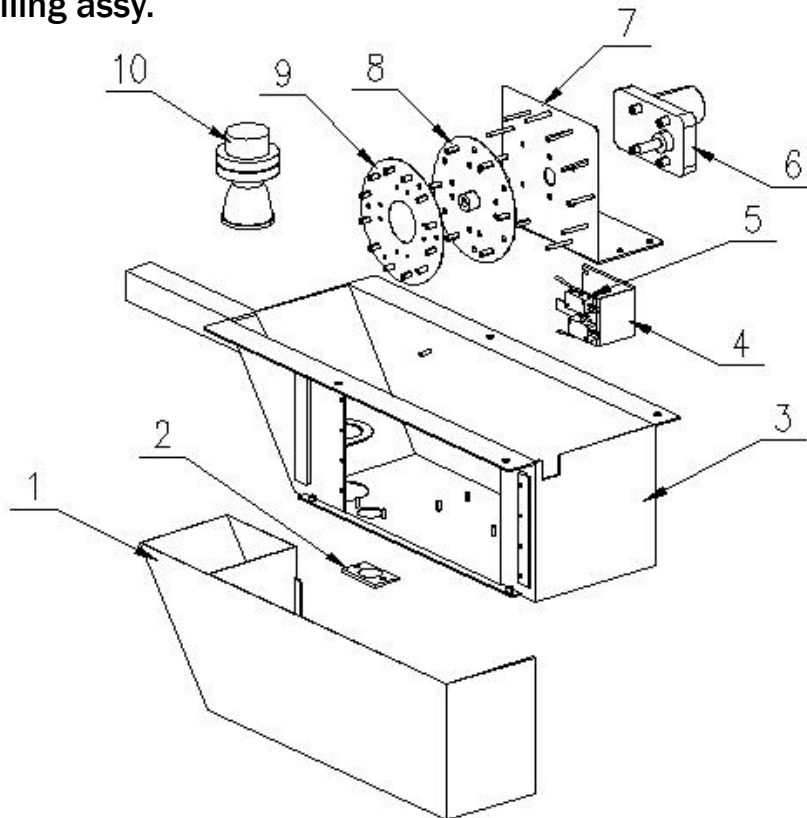
No.	Part No.	Code No.	Name	QTY
1	P139-123-000	20221701A015	R post	2
2	P139-124-000	20221701A016	R post back plate	2
3	P139-101-000	20221701A001	L sensor pressing plate	2
	P139-102-000	20621701A022	Sensor EVA	2
4	P139-008-000	29921701A008	Pushing rod assy.	2
5	P139-009-000	29921701A003	Turntable assy.	2
6	P139-125-000	20621701A024	Mirror plastic	2
7	P139-104-000	20221701A002	Slide pressing plate	4
8	P139-103-000	20621701A023	Slide plate	4
9	P139-116-000	20221701A010	R sensor pressing plate	2
	P139-102-000	20621701A022	Sensor EVA	4
10	P139-112-000	20221701A007	Frazil ice pressing plate	8
11	P139-113-000	20621701A016	Frazil ice plastic	4
12	P139-111-000	20221701A006	L post	2
13	P139-114-000	20221701A008	L post back plate	2
14	P139-003-000	29921701A010	Front door assy.	2

## 9.2 Rod assy. (without handle and ring)



No.	Part No.	Code No.	Name	QTY
1	P139-464-000	41108000005	Rod	2
2	P139-136-000	20221701A036	Rod baffle	2
3	P139-135-000	20621701A018	Fishing plate	2
4	P139-137-000	20221701A037	Rod baffle	2
	P139-466-000	25108070004	Iron wire	0.1*2
5	P139-465-000	41108000001	Small ring	2

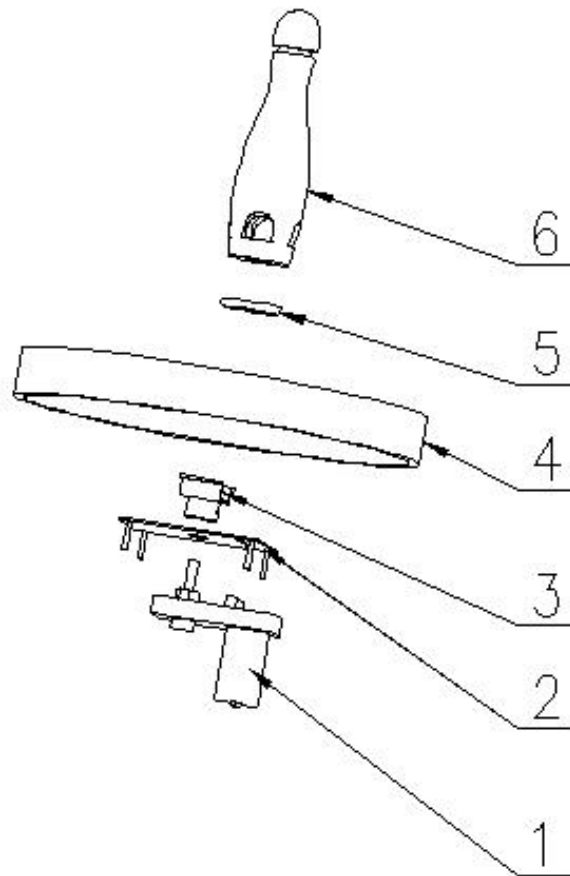
## 9.3 String rolling assy.



No.	Part No.	Code No.	Name	QTY
1	P139-193-000	20221701A057	Bracket cover plate	2
2	P139-192-000	20621701A033	string protect plate	2
3	P139-191-000	20221701A056	string rolling mounting bracket	2
4	P139-190-000	20221701A055	Rolling SW bracket	2
5	P139-457-000	22604000010	Micro SW	4
6	P139-455-000	23404000120	Motor	2
7	P139-187-000	20221701A052	Rolling motor bracket	2
8	P139-188-000	20221701A053	string rolling plate A	2
9	P139-189-000	20221701A054	string rolling plate B	2
10	P139-436-000	22004070001	E27 light	2

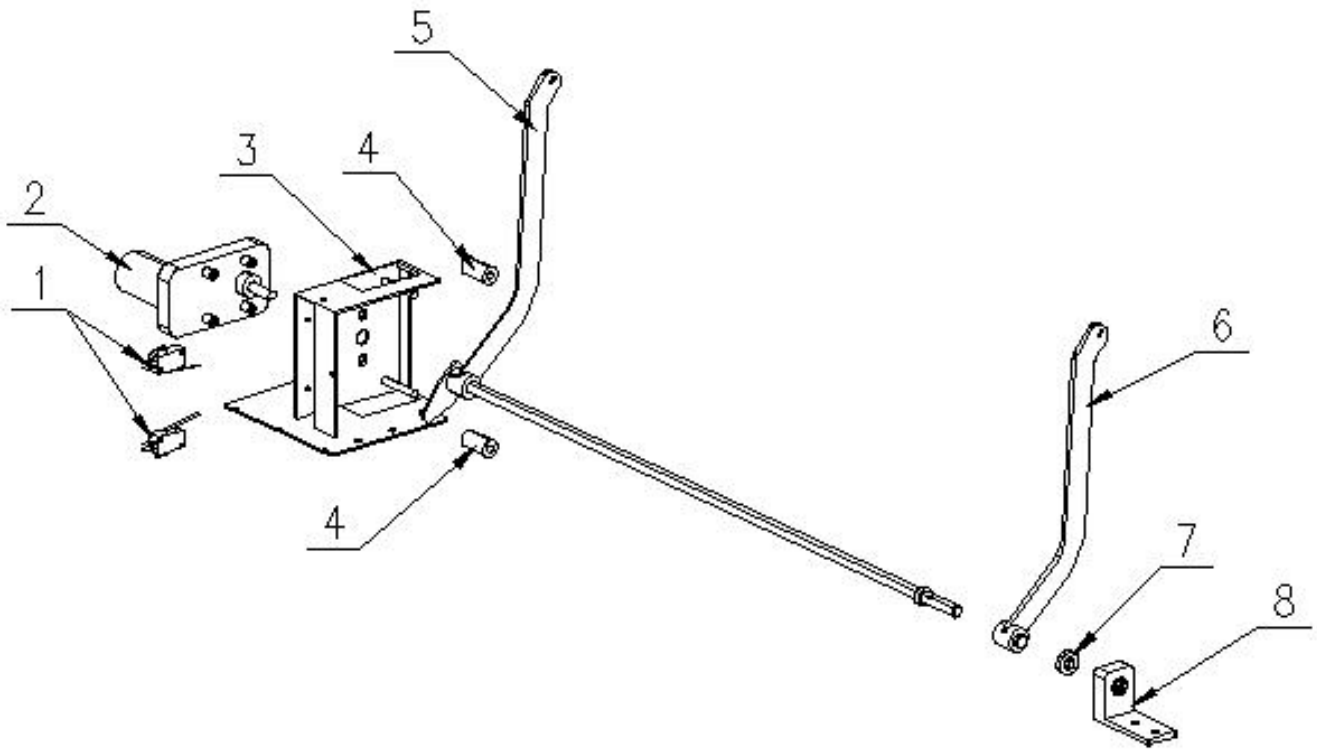


### 9.4 Turntable Assy.



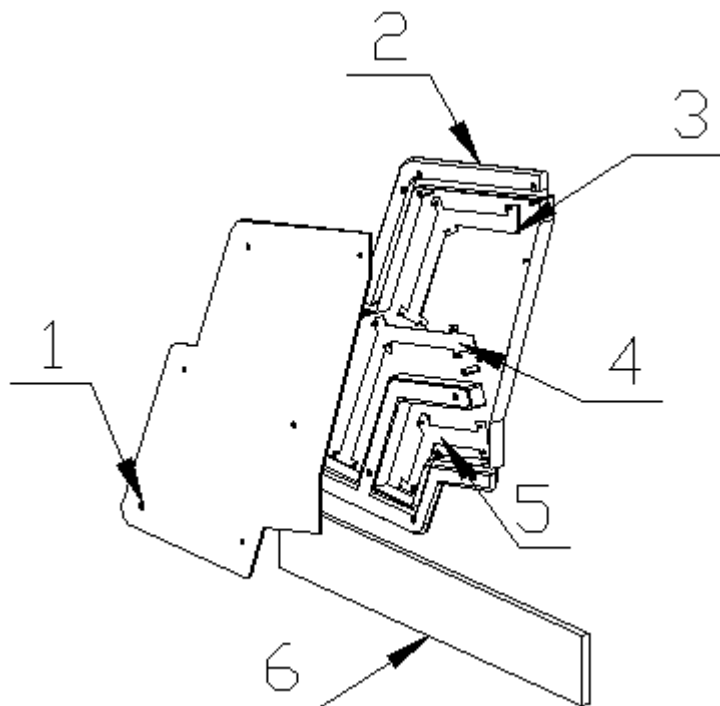
No.	Part No.	Code No.	Name	QTY
1	P139-455-000	23404000120	Motor	2
2	P139-146-000	20221701A043	Turntable motor bracket	2
3	P139-147-000	20221701A024	Turntable shaft	2
4	P139-009-000	29921701A003	Turntable assy.	2
5	P139-148-000	29921701A005	Bowling pin bottom assy.(normal)	2
6	P139-151-000	20621701A021	Bowling pin	2

## 9. 5 Pushing rod Assy.



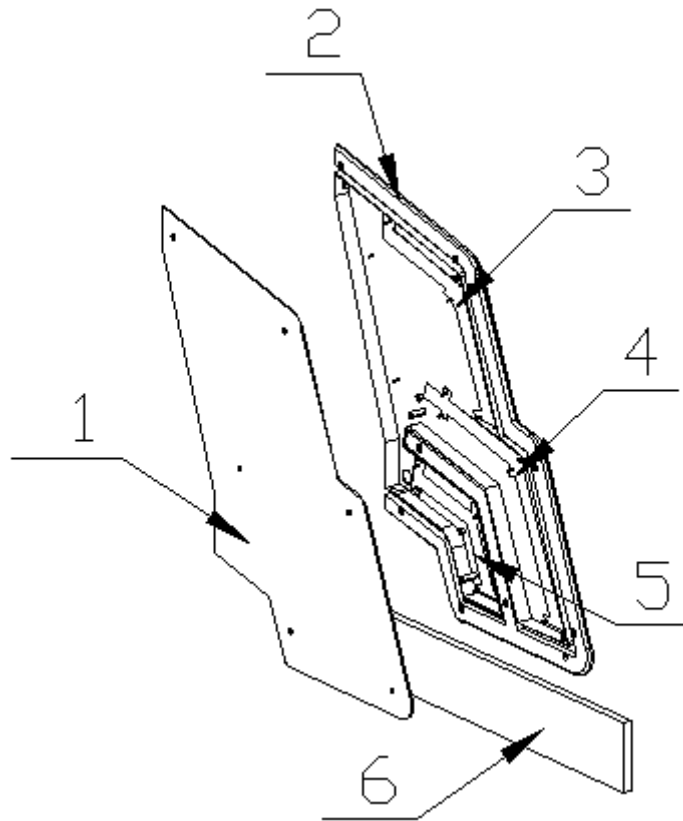
No.	Part No.	Code No.	Name	QTY
1	P139-457-000	22604000010	Micro SW	4
2	P139-455-000	23404000120	Motor	2
3	P139-156-000	20221701A025	Motor mounting bracket	2
4	P139-159-000	20621701A032	Damping plastic	4
5	P139-157-000	20221701A026	R swing rod	2
6	P139-158-000	20221701A034	L swing rod	2
7	P139-456-000	20106000197	BR	2
8	P139-160-000	20221701A027	B.R bracket	2

### 9.6 L Marquee assy.



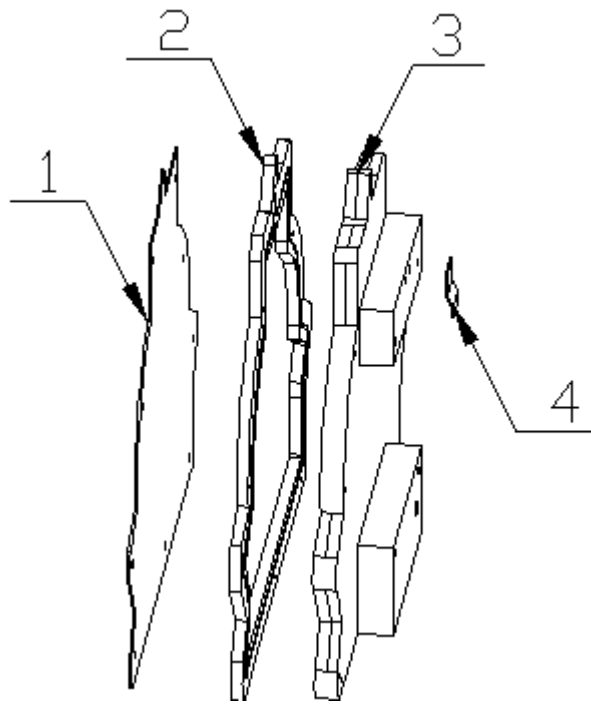
No.	Part No.	Code No.	Name	QTY
1	P139-724-000	20521701A004	L side decal	1
2	P139-174-000	20621701A009	L marquee plate B	1
	P139-175-000	20621701A010	L marquee plate C	1
	P139-176-000	20621701A011	L marquee plate A	1
	P139-173-000	20621701A008	L marquee plate A	1
3	P139-177-000	20621701A027	Light strip mounting plate A	2
4	P139-178-000	20621701A028	Light strip mounting plate B	2
5	P139-179-000	20621701A029	Light strip mounting plate C	2
6	P139-172-000	20221701A031	L marquee mounting plate	1

## 9.7 R Marquee assy.



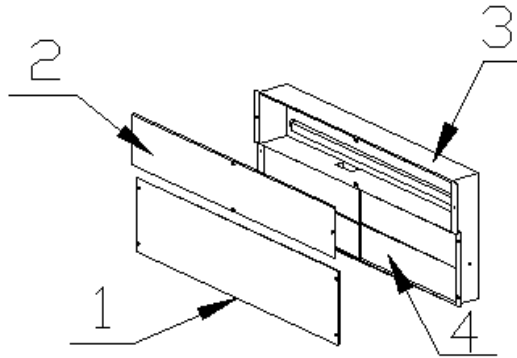
No.	Part No.	Code No.	Name	QTY
1	P139-725-000	20521701A005	R side decal	1
2	P139-181-000	20621701A012	R marquee plate A	1
	P139-182-000	20621701A013	R marquee plate B	1
	P139-183-000	20621701A014	R marquee plate C	1
	P139-184-000	20621701A015	R marquee plate D	1
3	P139-177-000	20621701A027	Light strip mounting plate A	1
4	P139-178-000	20621701A028	Light strip mounting plate B	1
5	P139-179-000	20621701A029	Light strip mounting plate C	1
6	P139-180-000	20221701A032	R marquee mounting plate	1

9.8 Marquee assy.



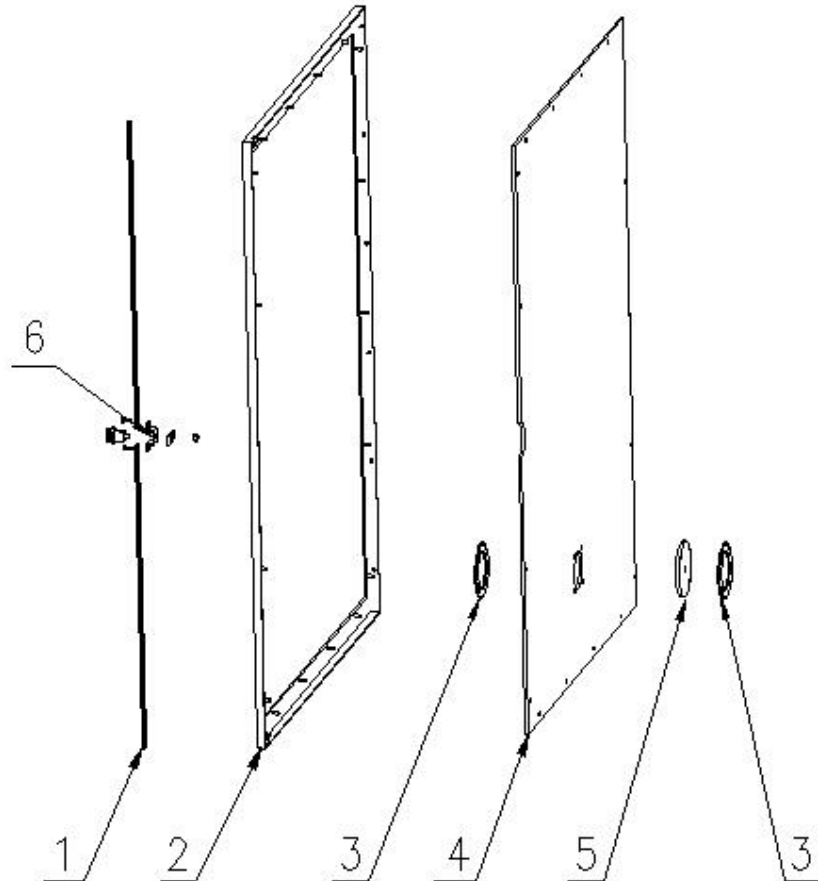
No.	Part No.	Code No.	Name	QTY
1	P139-721-000	20521701A001	Marquee plastic decal	1
2	P139-161-000	20621701A004	White plastic A	1
	P139-162-000	20621701A005	White plastic B	1
	P139-163-000	20621701A006	White plastic C	1
	P139-164-000	20621701A007	White plastic D	1
3	P139-538-000	20321701A035	Marquee back plate	1
	P139-539-000	20321701A036	Marquee plywood plate	1
	P139-540-000	20321701A037	Marquee back mid plate	1
	P139-541-000	20321701A038	Marquee bottom plywood	1
	P139-542-000	20321701A039	Marquee top plywood	1
4	P139-165-000	20221701A028	Mid marquee bracket	1

## 9.9 Mega bonus assy.



No.	Part No.	Code No.	Name	QTY
1	P139-727-000	20521701A007	Display decal	1
2	P139-726-000	20521701A006	Logo plastic decal	1
3	P139-185-000	20221701A033	Display mounting frame	1
4	P139-186-000	20221701A051	Display mounting plate	1

## 9.10 Front door Assy.

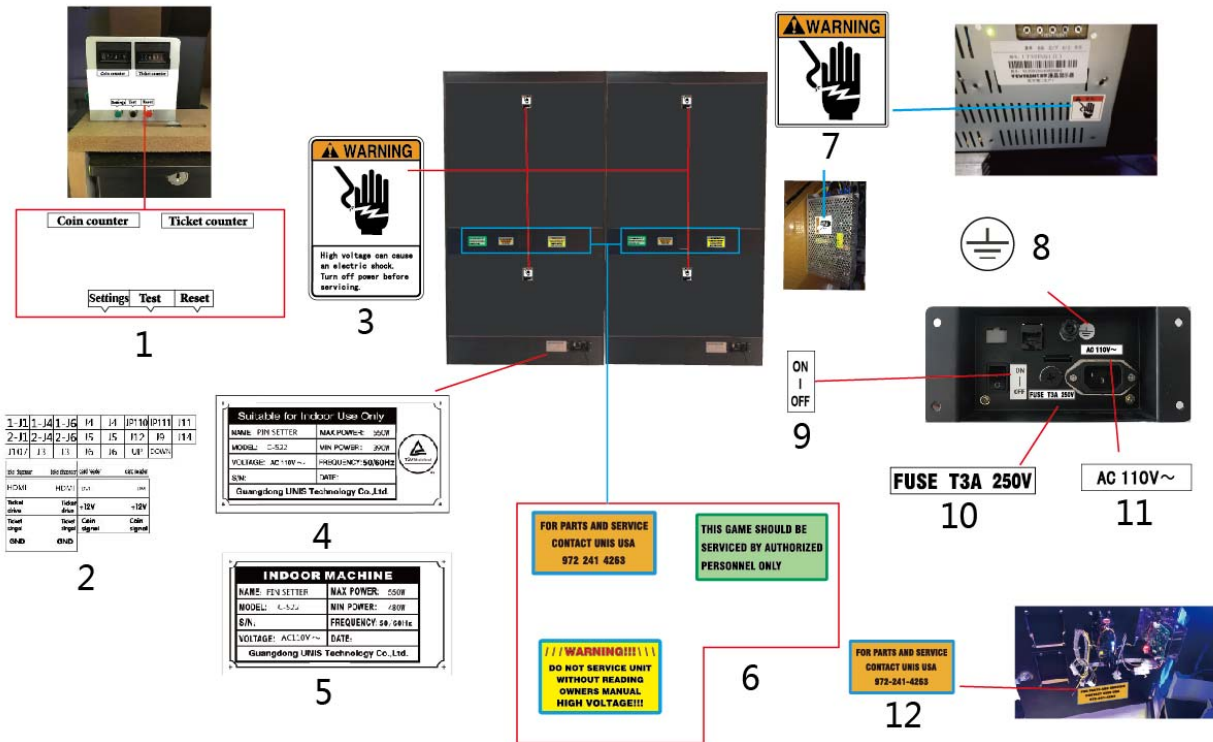


No.	Part No.	Code No.	Name	QTY
1	P139-169-000	20221701A030	Lock plate	4
2	P139-166-000	20221701A029	Front door	2
3	P139-171-000	20221701A038	Rod fix plate	4
4	P139-167-000	20621701A031	Front window	2
5	P139-170-000	20621701A025	Rod limited plate	2
6	P139-168-000	20221701A044	Lock plate shaft	2

### 9.11 Decals



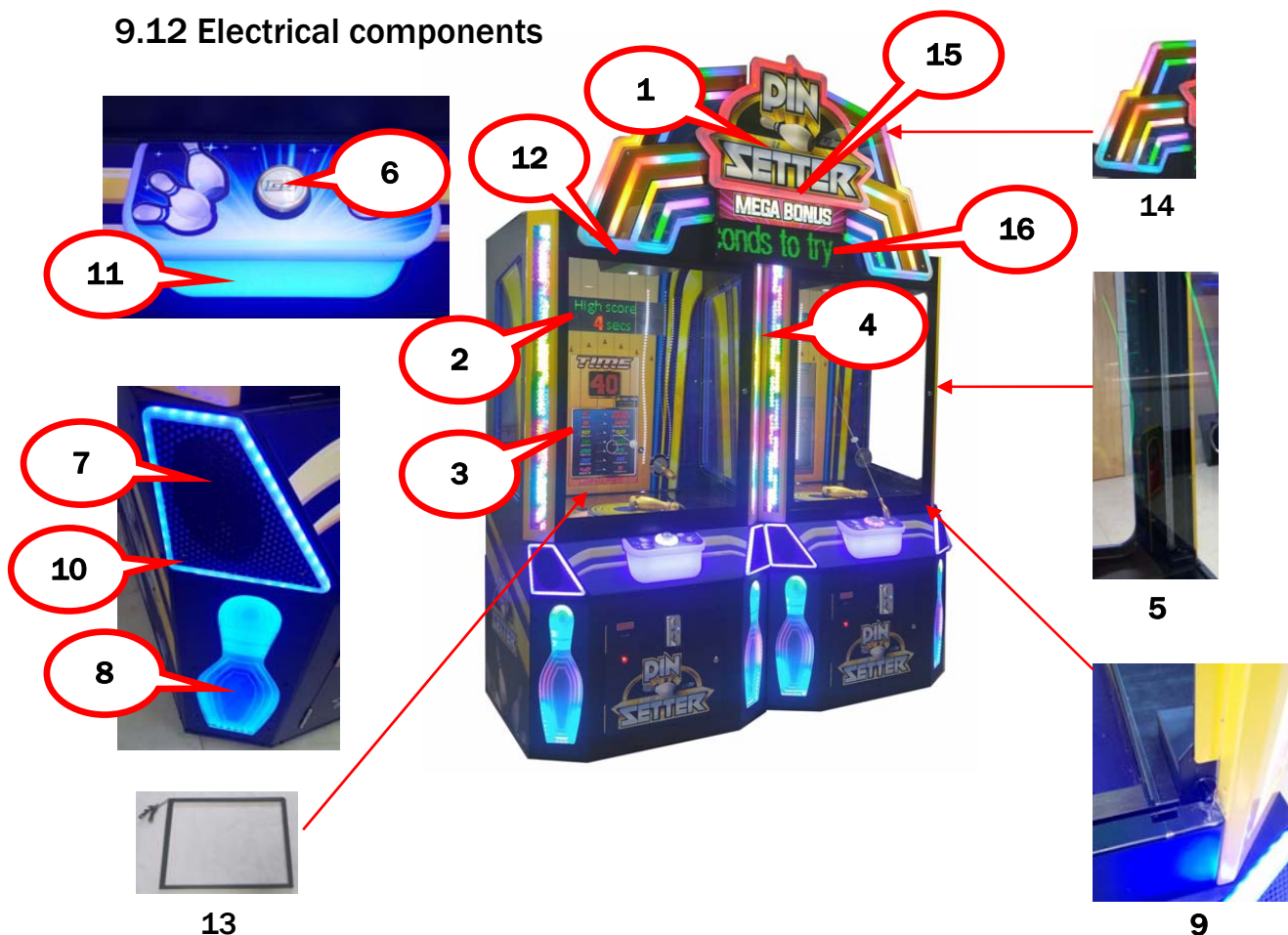
No.	Part No.	Code No.	Name	QTY
1	P139-723-000	20521701A003	Back plastic decal	2
2	P139-712-000	20521701007	Control panel bed plate decal	2
3	P139-724-000	20521701A004	L side decal	1
4	P139-713-000	20521701008A	Control panel decal	2
5	P139-715-000	20521701011	R side decal	1
6	P139-716-000	20521701012	L side decal	1
7	P139-720-000	20521701019	Button decal	2
8	P139-714-000	20521701010	Front door decal	2
9	P139-731-000	25600000034	Ticket label	2
10	P139-722-000	20521701A002	Bottom plastic decal	4
11	P139-725-000	20521701A005	R side decal	1
12	P139-726-000	20521701A006	Logo plastic decal	1
13	P139-718-000	20521701014	L bottom light plate decal	2
14	P139-717-000	20521701013	R bottom light plate decal	2
15	P139-721-000	20521701A001	Marquee plastic decal	1
16	P139-710-000	20521701005A	Turntable decal	2
17	P139-727-000	20521701A007	Display decal	1
18	P139-726-000	20521701A006	Logo plastic decal	1



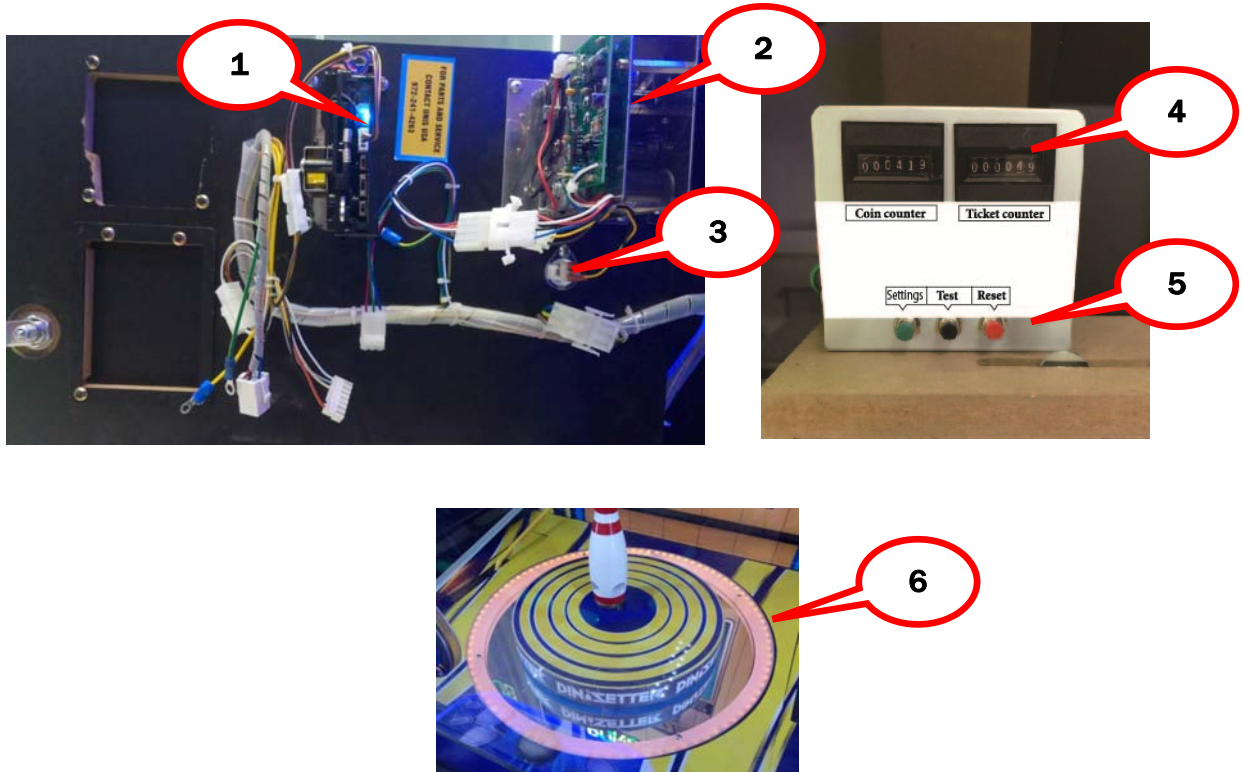
No.	Part No.	Code No.	Name	QTY
1	P139-719-000	20521701018	Meter label	2
2	P139-730-000	20521701A010	Component label	1
3	P139-703-000	25600000037	Voltage warning label (L)	4
4	P139-729-000	20521701A009	TUV 110V nameplate	1
5	P139-728-000	20521701A008	110V nameplate	1
6	P139-708-000	25600000095	Service label(L)	2
	P139-705-000	25600000067	Service notice label	2
	P139-704-000	25600000042	Service notice label 1	2
7	P139-702-000	25600000036	Voltage warning label (S)	4
8	P139-732-000	25600000091	GND label	2
9	P139-701-000	25600000017	Power SW label	2
10	P139-707-000	25600000073	Fuse label	2
11	P139-706-000	25600000071	110V label	2
12	P139-709-000	25600000096	Service label(S)	2



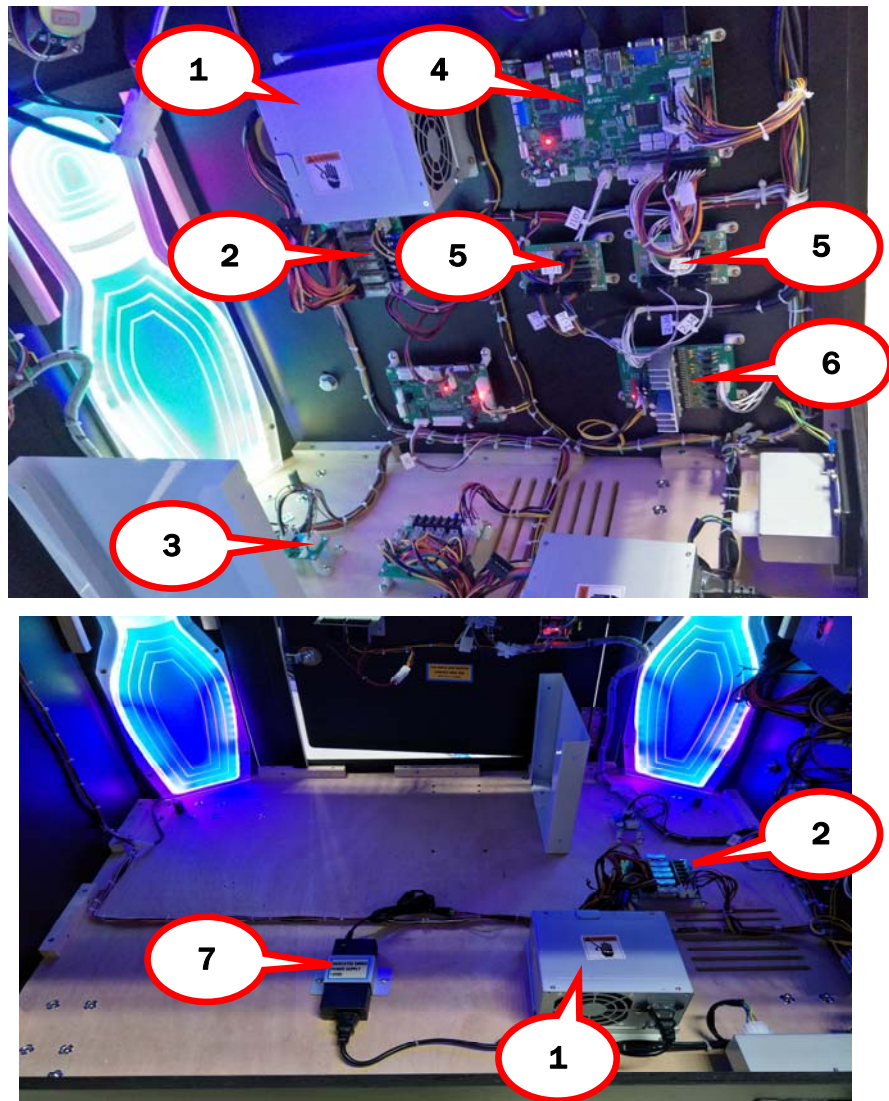
### 9.12 Electrical components



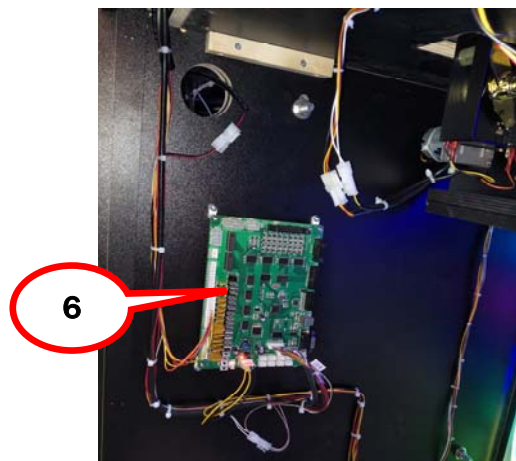
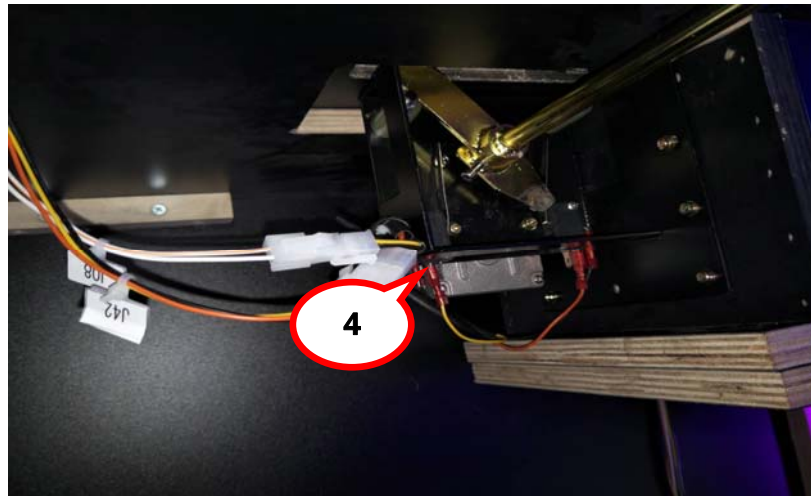
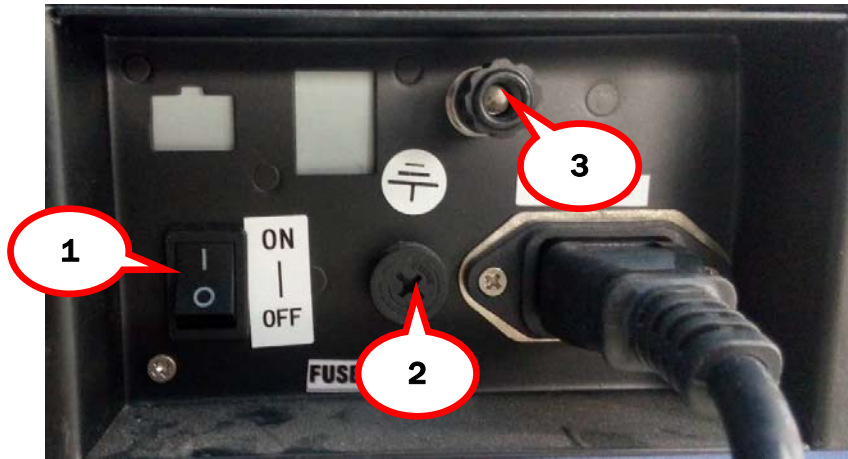
No.	Part No.	Code No.	Name	QTY
1	P139-416-000	22002013002	RGB light strip	2.5m
	P139-431-000	22002015005	5050 light strip	3.2m
2	P139-429-000	50801000010	Display tube	8
3	P139-406-000	21201027001	27" display	2
	P139-419-000	23307010003	DVI-HDMI video cable	2
4	P139-432-000	22002019002	WS2812b light strip	1.16m*4
5	P139-428-000	22003080020	5630 light	4
6	P139-437-000	22401230002	Button	2
7	P139-415-000	22801000016	Speaker	4
8	P139-418-000	22002013004	LED light strip-blue	0.57m*4
	P139-432-000	22002019002	WS2812b light strip	1.25m*4
9	P139-424-000	22601010002	Door SW	2
10	P139-418-000	22002013004	LED light strip(blue)	0.6M*2
11	P139-418-000	22002013004	LED light strip(blue)	0.75m*2
12	P139-436-000	22004070001	E27 light	2
13	P139-430-000	21202037001	37" sensor frame	2
14	P139-440-000	22002016032	IC1903 light strip	7.6m
15	P139-441-000	22003080005	5630 light strip	2
16	P139-429-000	50801000010	Display tube	4



No.	Part No.	Code No.	Name	QTY
1	P139-434-000	22301000002	Coin mech.	2
2	P139-408-000	23100000005	Ticket dispenser	2
3	P139-412-000	22003000003	LED bulb (12V)	2
	P139-413-000	22201000028	12V socket	2
4	P139-401-000	23000000005	Meter	4
	P139-409-000	22402010002	Red button	2
	P139-410-000	22402030002	Green button	2
5	P139-411-000	22402050001	Black button	2
	P139-417-000	22002013007	LED light strip-yellow	3.2m

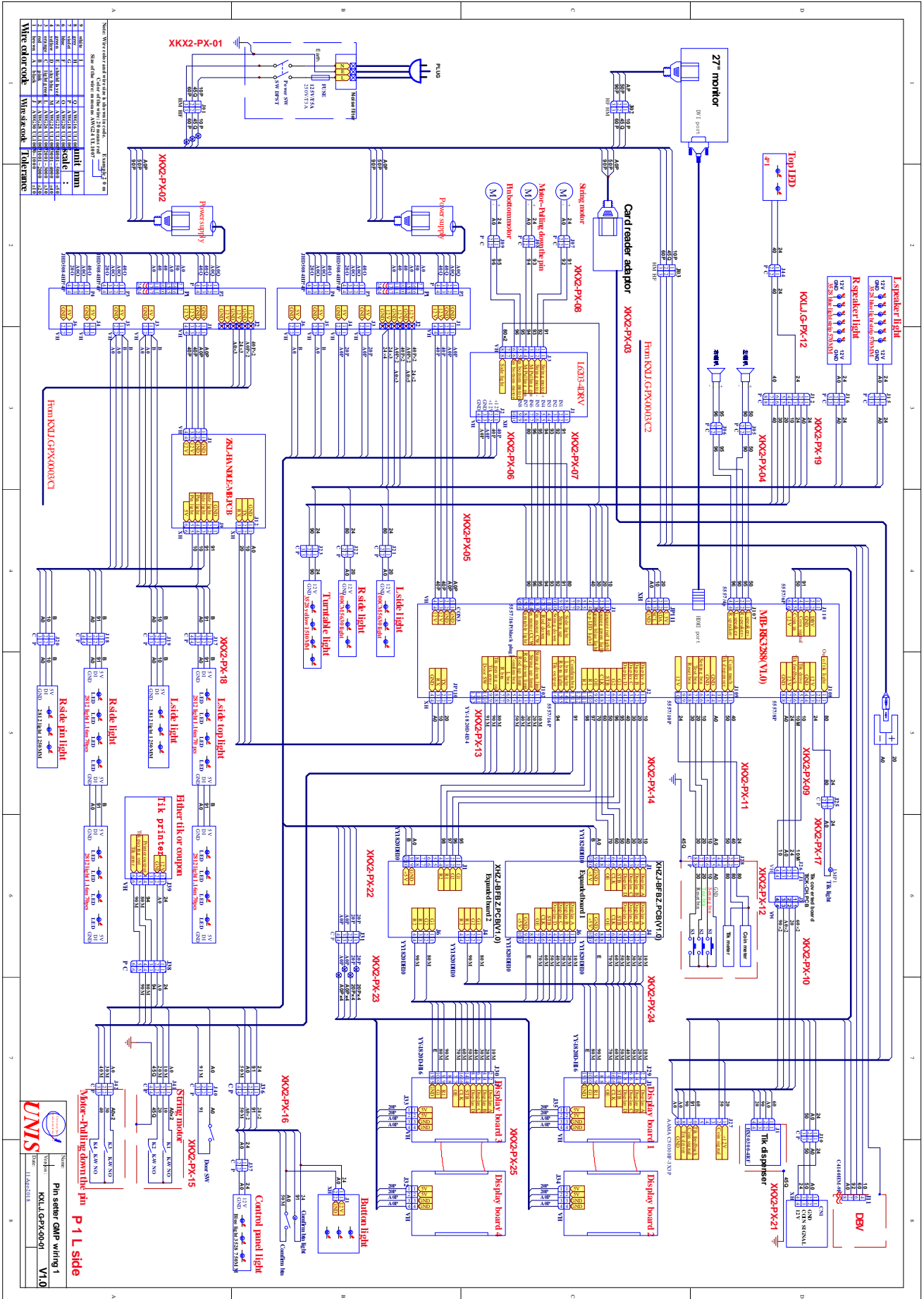


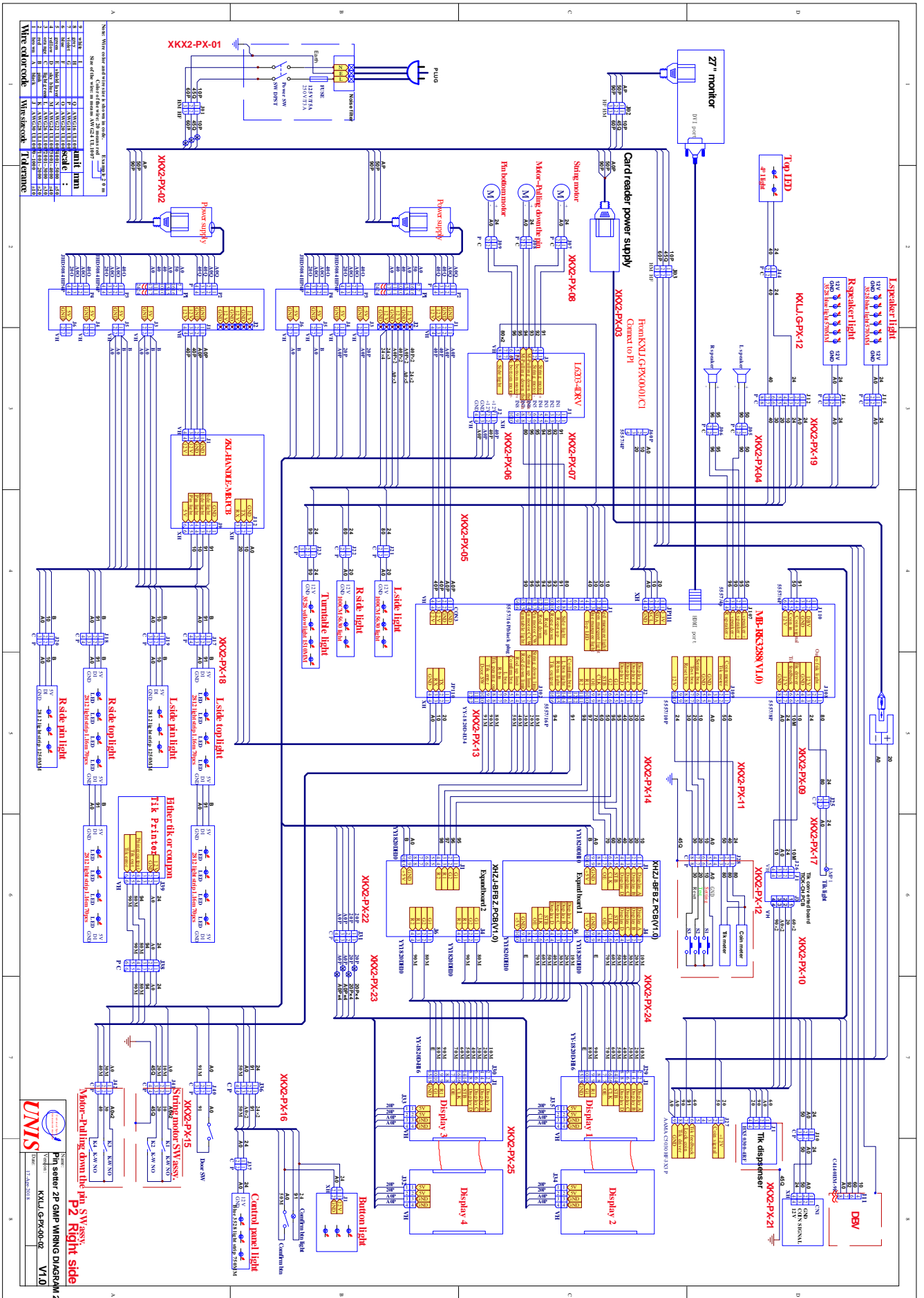
No.	Part No.	Code No.	Name	QTY
1	P139-427-000	21602000001A	Power supply	2
2	P139-407-000	29711605001	Short circuit board (Fuseboard01(V1.0))	4
3	P139-423-000	29790700002	Ticket converted board	2
4	P139-443-000	23309000276	Cable set	1
	P139-414-000	21107210027	Android board	2
5	P139-435-000	29721701001	PCB	4
6	P139-404-000	29741315004	Motor drive board	2
7	P139-438-000	21603020001A	Adaptor	2
	P139-439-000	23301040022	Power cord	2

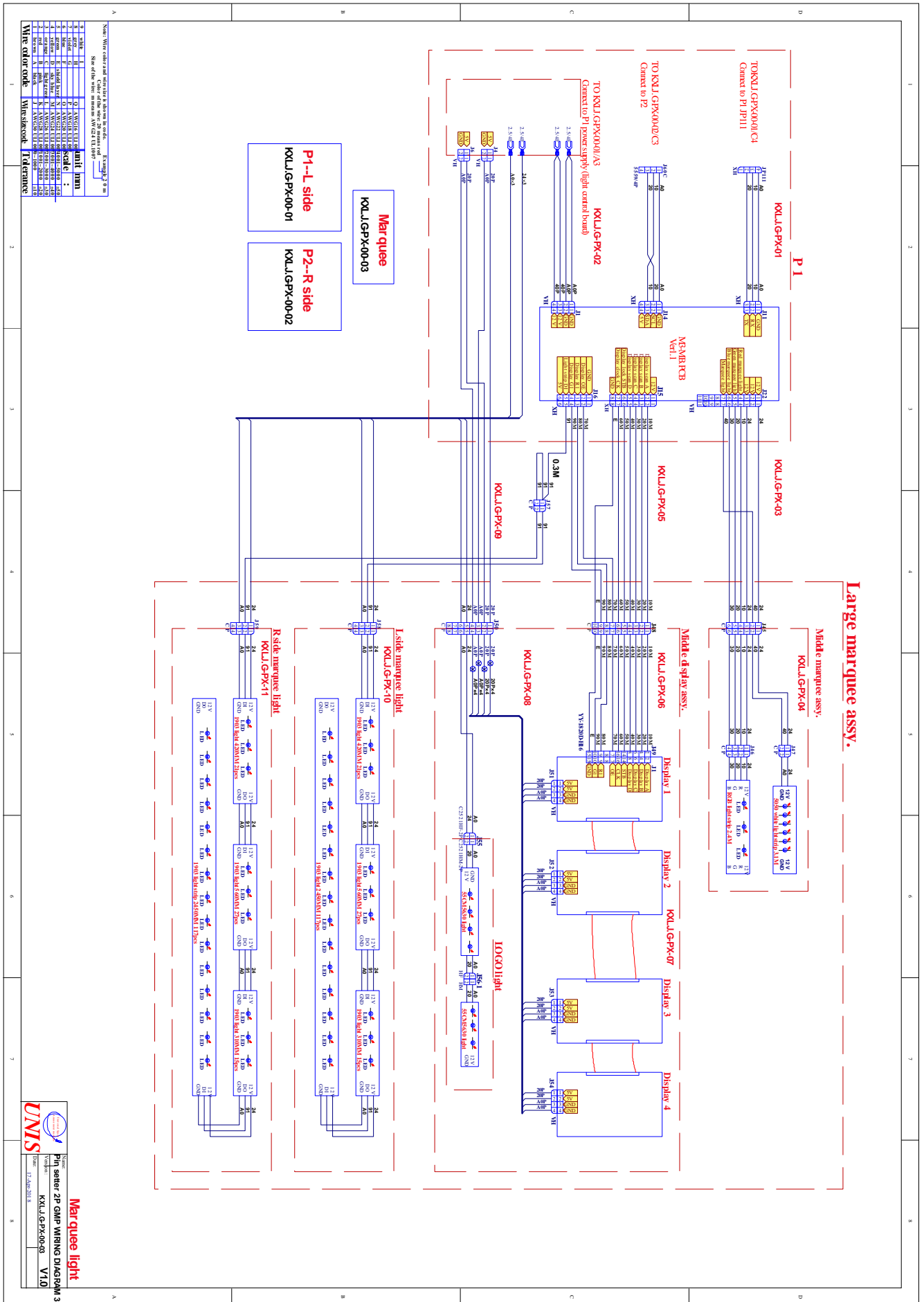


No.	Part No.	Code No.	Name	QTY
1	P139-403-000	22601000005	Rocket SW	2
2	P139-402-000	21902000006	Fuse socket	2
	P139-803-000	21901000013	Fuse	2
3	P139-405-000	21412000001	Binding post	2
4	P139-457-000	22604000010	Micro SW	4
5	P139-804-000	23301010042	Power cord	2
	P139-426-000	23201000001A	Filter	2
6	P139-442-000	29791300001	M3 board	1

# 10. WIRING DIAGRAM







Note: Wire color and electrical symbols in brackets.

Scale of the drawing: 20 mm = 1" (1:20)

Scale of the wire: 0.8 mm = 32 AWG (1:20)

1	WHITE	W
2	RED	R
3	GREEN	G
4	BLUE	B
5	BROWN	BR
6	BLACK	BLK
7	YELLOW	Y
8	PINK	P
9	GRAY	GRY
10	ORANGE	OR
11	PURPLE	PUR
12	TEAL	TEAL
13	CYAN	CYAN
14	MAGENTA	MAG
15	SLIVER	SLV
16	SLIVER	SLV
17	SLIVER	SLV
18	SLIVER	SLV
19	SLIVER	SLV
20	SLIVER	SLV
21	SLIVER	SLV
22	SLIVER	SLV
23	SLIVER	SLV
24	SLIVER	SLV
25	SLIVER	SLV
26	SLIVER	SLV
27	SLIVER	SLV
28	SLIVER	SLV
29	SLIVER	SLV
30	SLIVER	SLV
31	SLIVER	SLV
32	SLIVER	SLV
33	SLIVER	SLV
34	SLIVER	SLV
35	SLIVER	SLV
36	SLIVER	SLV
37	SLIVER	SLV
38	SLIVER	SLV
39	SLIVER	SLV
40	SLIVER	SLV
41	SLIVER	SLV
42	SLIVER	SLV
43	SLIVER	SLV
44	SLIVER	SLV
45	SLIVER	SLV
46	SLIVER	SLV
47	SLIVER	SLV
48	SLIVER	SLV
49	SLIVER	SLV
50	SLIVER	SLV
51	SLIVER	SLV
52	SLIVER	SLV
53	SLIVER	SLV
54	SLIVER	SLV
55	SLIVER	SLV
56	SLIVER	SLV
57	SLIVER	SLV
58	SLIVER	SLV
59	SLIVER	SLV
60	SLIVER	SLV
61	SLIVER	SLV
62	SLIVER	SLV
63	SLIVER	SLV
64	SLIVER	SLV
65	SLIVER	SLV
66	SLIVER	SLV
67	SLIVER	SLV
68	SLIVER	SLV
69	SLIVER	SLV
70	SLIVER	SLV
71	SLIVER	SLV
72	SLIVER	SLV
73	SLIVER	SLV
74	SLIVER	SLV
75	SLIVER	SLV
76	SLIVER	SLV
77	SLIVER	SLV
78	SLIVER	SLV
79	SLIVER	SLV
80	SLIVER	SLV
81	SLIVER	SLV
82	SLIVER	SLV
83	SLIVER	SLV
84	SLIVER	SLV
85	SLIVER	SLV
86	SLIVER	SLV
87	SLIVER	SLV
88	SLIVER	SLV
89	SLIVER	SLV
90	SLIVER	SLV
91	SLIVER	SLV
92	SLIVER	SLV
93	SLIVER	SLV
94	SLIVER	SLV
95	SLIVER	SLV
96	SLIVER	SLV
97	SLIVER	SLV
98	SLIVER	SLV
99	SLIVER	SLV
100	SLIVER	SLV

**Marquee light**

UNIS

Pin setter ZP GMP WIRING DIAGRAM 3

Model: KLU.G-PX-00-03

Ver: V1.0

Date: 11.04.2018