

BEAT THE GOALIE



Be Sure
to Read this
Manual
Before Use



Operation Manual



www.universal-space.com

CONTENT

IMPORTANT SAFETY INSTRUCTIONS..... 2

1. SPECIFICATIONS..... 4

2. PACKAGE CONTENTS..... 5

3. PART NAME..... 6

4. SET UP & INSTALLATION 7

5. HOW TO PLAY 10

7. ERROR MESSAGE AND RECOVERY 16

8. MAINTENANCE & INSPECTION 17

9. OVERALL CONSTRUCTION 18

Non-technical personnel who do not have technical knowledge and Expertise should refrain from performing such work that this manual require or perform tasks which are not explained in this manual. Failing to comply can cause severe accidents such as electric shock or other serious injuries. All repairs must be performed to original manufacturer specifications.

WARNING: To reduce the risk of fire, electric shock or personal injury, unplug or disconnect the machine from the power supply before servicing.

Thank you for purchasing **BEAT THE GOALIE**. We hope you enjoy the product.

This manual contains valuable information about how to operate and maintain your game machine properly and safely. It is intended for the owner and/or personnel in charge of product operation. Carefully read and understand the instructions.

If you need any help during installation and setup please utilize this manual and troubleshooting guide. If the product fails to function properly, *non-technical personnel should under no circumstance attempt to service the machine*. Contact your distributor or manufacturer for help.

Before use, please read **IMPORTANT SAFETY INSTRUCTIONS**.

IMPORTANT SAFETY INSTRUCTIONS

To ensure the safe usage of this product, carefully read and understand these instructions before operating your game.

Save these instructions for future reference.

Use this product only as described in this manual. Other uses not recommended may cause fire, electric shock or personal injury. Unplug the game from the outlet when not in use, when moving from one location to another, and before cleaning/servicing.

Explanations which require special attention are indicated by signs of warning. Depending on the potential hazardous degree, the terms: **NOTE**, **NOTICE**, and **WARNING** are used.

NOTE: A NOTE indicates useful hints or information about product usage.

NOTICE: A NOTICE indicates potential damage to product and how to avoid the problem.

WARNING: A WARNING indicates a potential for product damage or serious personal injury.

It is important to understand the meaning of the following **HAZARD SIGNS** before continuing:

High Voltage and Shock Hazard:

High voltage can cause electric shock.
Turn off/unplug power before servicing.



High Temperature Hazard:

This part may cause scalding.
Do not touch. Surface may be hot.



No Touching Hazard:

This part may be hot or can cause electric shock.
Do not touch.



Use the following safety guidelines to help ensure your own personal safety and to help protect your equipment and surrounding environment from potential damage.



This product is an indoor game machine. Do not install outdoors.

Avoid installing in the following places to prevent fire, electric shock, injury and/or machine malfunctioning:

- Places subject to rain/moisture, or places subject to high humidity.
- Places subject to direct sunlight, or places subject to extremely hot or cold temperatures to ensure that it is used within the specified operating range.
- Places where inflammable gas may be present or in the vicinity of highly inflammable/volatile chemicals or items that can easily catch fire
- On unstable or sloped surfaces. The machine may topple or cause unforeseen accidents.
- Vicinity of fire exits, fire extinguishers etc that may block/prevent safety measures

IMPORTANT NOTE:

ALL REPAIRS MUST BE DONE TO ORIGINAL MANUFACTURER SPECIFICATIONS.

FAILURE TO DO SO VOID ALL WARRANTIES AND OPERATOR ASSUMES ALL RISKS.

Note: The contents of this manual may be updated without notice.

1. SPECIFICATIONS


Rated power supply: AC110V 50/60Hz

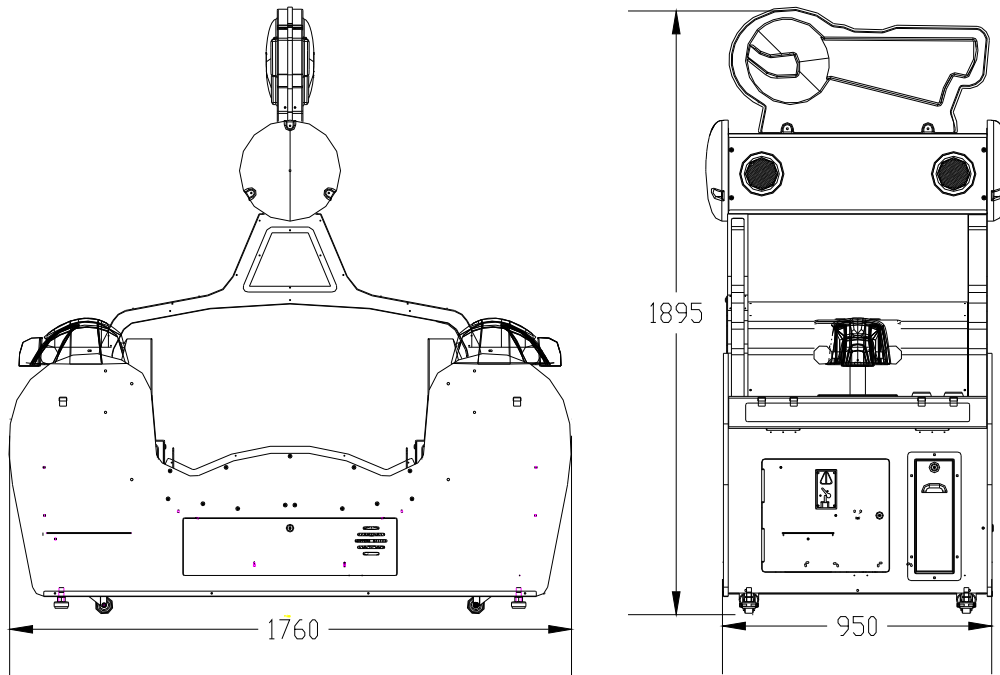
Min. Power consumption: 100W

Max. Power consumption: 170W

Dimensions: W1760×D950×H1895 (mm)

Weight: Approximately 205kgs

 **NOTICE:** After turning off the game, please wait at least 1 minute before restarting again.







Note: Game parameters are subject to change without notice.

2. PACKAGE CONTENTS

Open the package and make sure all the items are included:

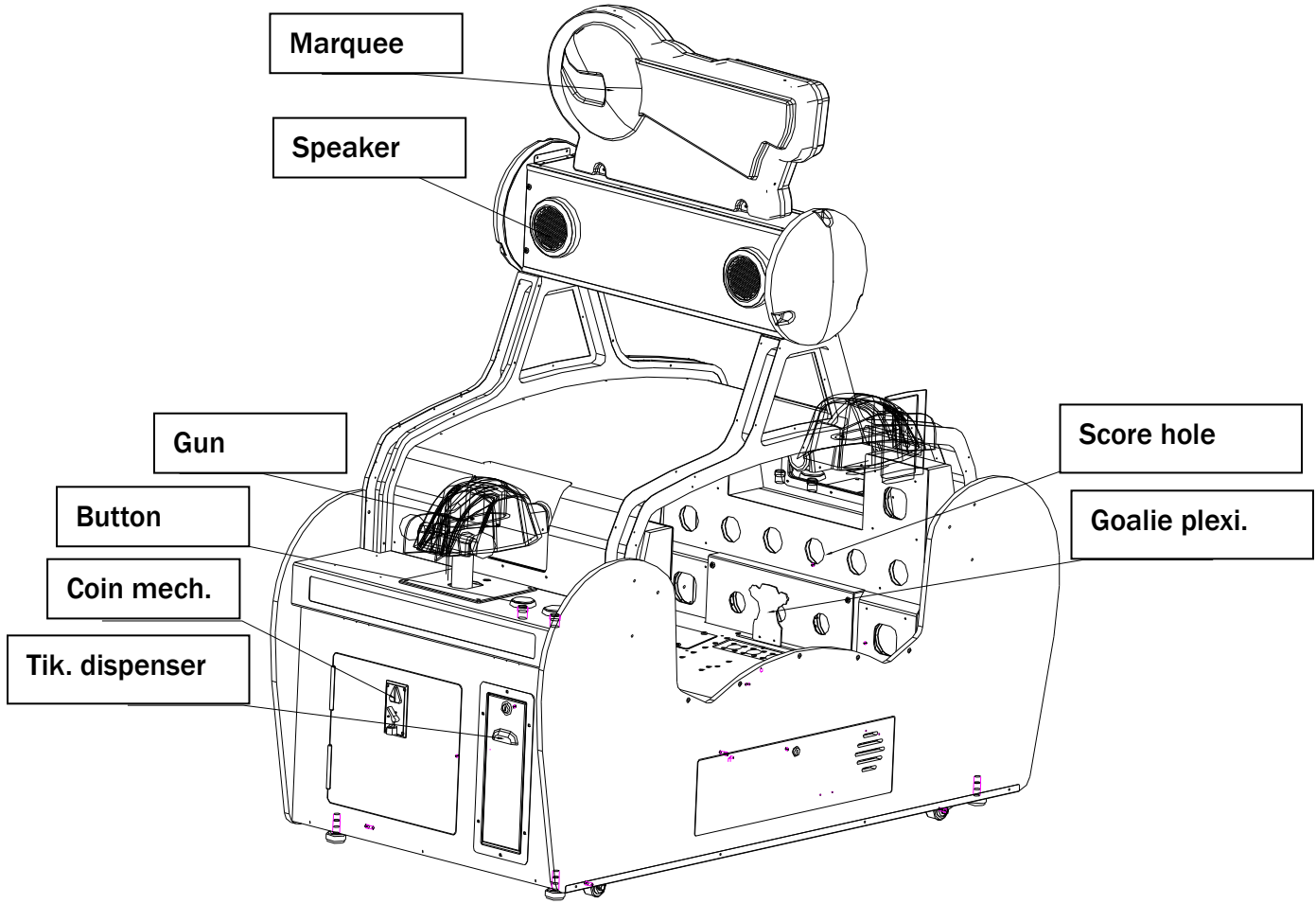
- 1 x Body Assembly
- Following accessories

NO.	Part No.	Code	Name	Spec.	Qty	Picture
1	B121-467-000	25300172002	Key	171B	1	
2	B121-466-000	25300171002	Key	171A	2	
3	B121-465-000	21901000015	Fuse	Φ5×20mm T6.3A 250VAC	1	
4	B121-742-000	41440000052	Manual	English	1	
5	B121-101-000	20611407004	Ball spin	φ50	2	
6	B121-102-000	20611407014	Ball	φ35	20	
7	B121-403-000	29711407005	Sensor 2	MFDZ-HW2.PCB(V1.0) blue	1	
8	B121-404-000	29711407004	Sensor 2	MFDZ-HW2.PCB(V1.0) green	1	
9	B121-405-000	29711407003	Sensor 2	MFDZ-HW2.PCB(V1.0) yellow	1	
10	B121-406-000	29711407002	Sensor 2	MFDZ-HW2.PCB(V1.0) red	1	

If any items are found to be missing, please contact your sales representative for help immediately.

NOTE: Part models are subject to change without notice.

3. PART NAME



4. SET UP & INSTALLATION

! This product is an indoor game machine. Do not install outdoors.

- Refer to IMPORTANT SAFETY INSTRUCTIONS (Pg. 2) for places to avoid
- Place the unit on a dry level surface
- Ventilation openings in the back of the unit must not be obstructed by objects or by wall.

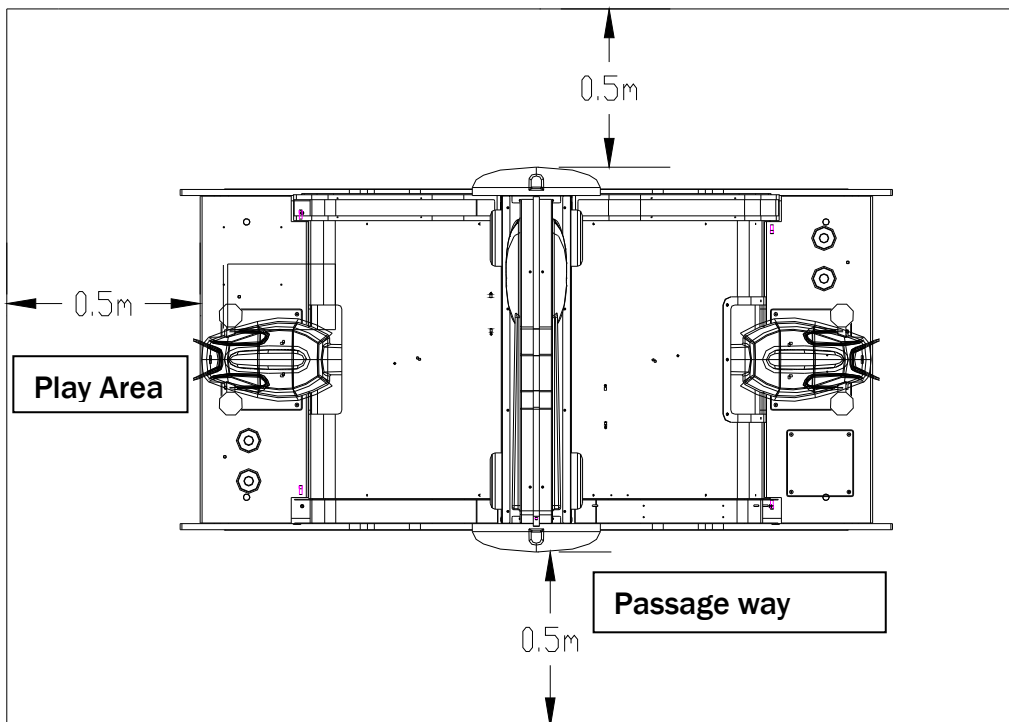
4.1 Play Zone

This machine requires space for playing and for maintenance as shown below.

Leave space around the game upon installation:

Service Area: 500mm

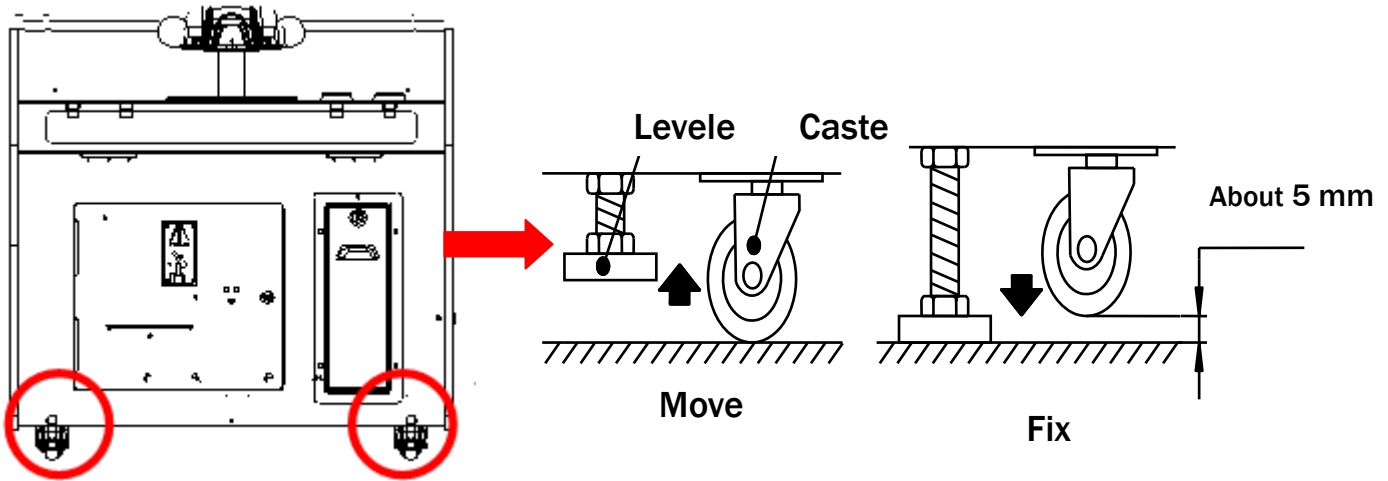
Play Area: 500mm



4.2 Level Adjustment

Install this machine on a flat surface. Adjust levers to lift casters off the ground to level the game. If the game is installed on an unsuitable floor, it could cause game malfunction.

To secure the game, adjust the Leveler down until it touches the floor, lifting the casters off the ground by 5mm. Repeat the same for all levelers.

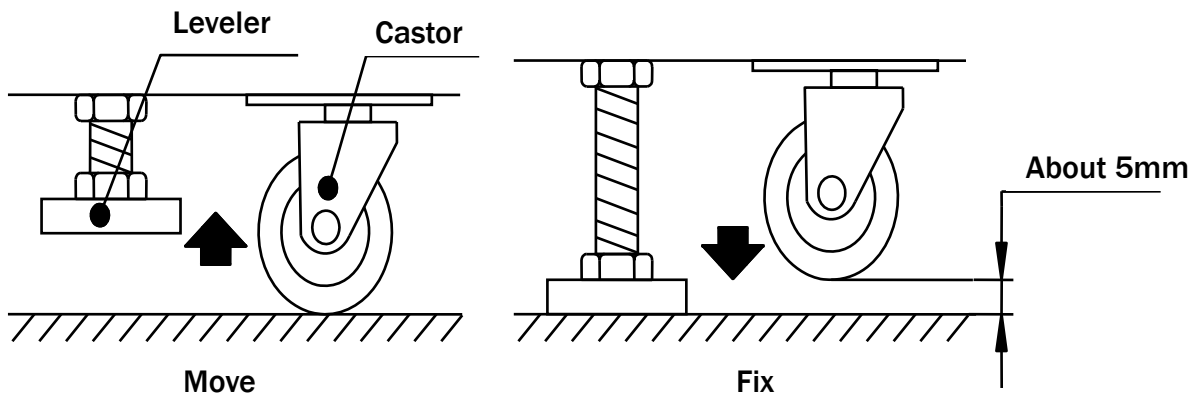


NOTICE

Make sure the machine is level with the ground and all the adjustable legs should stick to the floor closely.

4.4 Transporting the Machine

If you need to move the game, adjust the levelers back to an “up” position so the casters touch the ground.



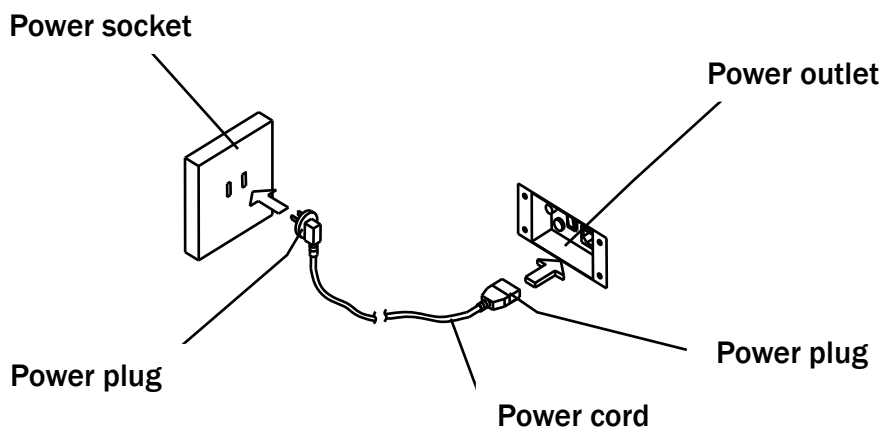
NOTICE

- Be careful not to damage the machine during transport.
- The machine should be handled with care when bringing it down from a higher level.
- Always unplug the game before moving.
- Keep the machine in upright position during transport.
- For longer distance transport, package the game properly to prevent damages.

4.5 Connecting Power

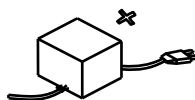
! WARNING: Check the voltage rating before you connect the equipment to an electrical outlet to ensure that the required voltage and frequency match the available power source. Please refer the label of the machine.

- Do not plug the equipment power cables into an electrical outlet if the power cable is damaged.
- Avoid putting many loads on one electrical outlet as it could generate heat and fire resulting from overload.
- Connect the grounding conductor to the earth terminal (GND):

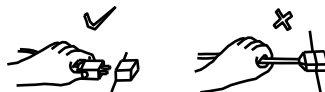


! WARNING

Ensure no heavy objects rest on the power cord. Check to make sure the game cabinet does not sit on the power cord as this could damage the cord and become hazardous.



To disconnect the game, grip the plug and pull it from the wall outlet. Never pull by the cord.



To prevent electric shock, do not touch the power plug when hand is wet.



Ensure that nothing rests on the power cord and that it is not located where it can be stepped on or tripped over.



5. HOW TO PLAY



Step 1: Insert coin(s).



Step 2: Select game mode.

Single player: No double Bonus.

Player battle: Double Bonus



1000 score holes: When you shoot in more than 10 balls or last 10s game time, holes will light up. Then you can shoot balls in them.

Step 3: Shoot the balls in light up holes to win scores.



Tik. display

Score display

Remaining time

SCORE BOARD	
SCORE	TICKET
0-999	4
1000-1999	8
2000+	12
BEAT BONUS SCORES	BONUS

Score board

6. GAME OPTIONS

Item	Content	SW1							
		1	2	3	4	5	6	7	8
Coins per game	1	ON	ON	ON					
	2	off	on	on					
	3	on	off	on					
	4	off	off	on					
	1/2	on	on	off					
	1/3	off	on	off					
	1/4	on	off	off					
	Free	off	off	off					
Play time	30S				on	on			
	40S				OFF	ON			
	50S				on	off			
	60S				off	off			
Demo music	120s						on	on	
	180s						off	on	
	240s						on	off	
	OFF						OFF	OFF	
Memory	YES								ON
	NO								off

Item	Content	SW2							
		1	2	3	4	5	6	7	8
Bonus Score	3000	on	on	on					
	3500	off	on	on					
	4000	on	off	on					
	4500	OFF	OFF	ON					
	5000	on	on	off					
	6000	off	on	off					
	7000	on	off	off					
	9000	off	off	off					
Ticket error	Continue to play				ON				
	All attendant				off				
Bonus ratio for 2 play	1					on	on		
	1.3					off	on		
	1.5					on	off		
	2					OFF	OFF		
	N/C							OFF	OFF

Item	Content	SW3							
		1	2	3	4	5	6	7	8
Bonus Tickets	30	on	on	on					
	50	off	on	on					
	80	on	off	on					
	100	OFF	OFF	ON					
	150	on	on	off					
	200	off	on	off					
	300	on	off	off					
	450	off	off	off					
Score Group	①					on	on	on	
	②					off	on	on	
	③					on	off	on	
	④					off	off	on	
	⑤					ON	ON	OFF	
	⑥					off	on	off	
	⑦					on	off	off	
	⑧					off	off	off	
	N/C				ON				ON

Item	Content	SW4							
		1	2	3	4	5	6	7	8
	N/C	OFF	OFF	OFF	OFF	OFF	OFF	OFF	OFF

SW	0-999	1000-1999	2000-Bonus	Bonus
①	0	0	0	0
②	1	2	3	Bonus
③	2	3	4	Bonus
④	2	4	8	Bonus
⑤	4	8	12	Bonus
⑥	5	10	15	Bonus
⑦	10	20	30	Bonus
⑧	20	40	60	Bonus

Input	Content	Input	Content	Input	Content	Input	Content	Input	Content
I1	1# hole 1	I9	1# hole 9	I17	1# Ball sensor	I25	2# hole 7	I33	2# Single select btn
I2	1# hole 2	I10	1# hole 10	I18	1# Ticket reset btn	I26	2# hole 8	I34	2# Double select btn
I3	1# hole 3	I11	1# hole 11	I19	2# hole 1	I27	2# hole 9	I35	2# Ball sensor
I4	1# hole 4	I12	1# hole 12	I20	2# hole 2	I28	2# hole 10	I36	2# Ticket reset btn
I5	1# hole 5	I13	1# hole 13	I21	2# hole 3	I29	2# hole 11	I37	
I6	1# hole 6	I14	1# Move target mid	I22	2# hole 4	I30	2# hole 12	I38	
I7	1# hole 7	I15	1# Single select btn	I23	2# hole 5	I31	2# hole 13	I39	
I8	1# hole 8	I16	1# Double select btn	I24	2# hole 6	I32	2# Move target mid	I40	

Output	Content	Output	Content	Output	Content	Output	Content	Output	Content
OUT1	1# Move target motor	OUT9	1# Hole light 9	OUT17	2# Hole light 1	OUT25	2# Hole light 9	OUT33	1# Hole light 1
OUT2	1# Ticket error light	OUT10	1# Hole light 10	OUT18	2# Hole light 2	OUT26	2# Hole light 10	OUT34	1# Hole light 2
OUT3	1# Single button light	OUT11	1# Hole light 11	OUT19	2# Hole light 3	OUT27	2# Hole light 11	OUT35	1# Hole light 3
OUT4	1# Double button light	OUT12	1# Hole light 12	OUT20	2# Hole light 4	OUT28	2# Hole light 12	OUT36	1# Hole light 4
OUT5	2# Move target motor	OUT13	1# Hole light 13	OUT21	2# Hole light 5	OUT29	2# Hole light 13	OUT37	1# Hole light 5
OUT6	2# Ticket error light	OUT14	1# Send ball motor	OUT22	2# Hole light 6	OUT30	2# Send ball motor	OUT38	1# Hole light 6
OUT7	2# Single button light	OUT15	1# Shot ball motor	OUT23	2# Hole light 7	OUT31	2# Shot ball motor	OUT39	1# Hole light 7
OUT8	2# Double button light	OUT16	1# Gun light	OUT24	2# Hole light 8	OUT32	2# Gun light	OUT40	1# Hole light 8

Plug	Content	Plug	Content	Plug	Content	Plug	Content
J19-1	1# Lock coin	J21-1	1# Tik. Driver	J8-1	+12V	J27-1	L speaker
J19-2	1# Coin SW1	J21-2	1# Tik. Feedback	J8-2	+12V	J27-2	L speaker
J19-3	GND	J21-3	12V	J8-3	Tik. Meter	J28-1	R speaker
J19-4	2# Lock coin	J21-4	GND	J8-4	Coin meter	J28-2	R speaker
J19-5	2# Coin SW2	J21-5	2# Tik. Driver				
J19-6	12V	J21-6	2# Tik. Feedback	J5-1	RS-485B		
		J21-7	12V	J5-2	RS-485A		
		J21-8	GND	J5-3	GND		

Digital display		
Content	1#	2#
Time	LED<1>1-2	LED<4>1-2
Tickets	LED<1>3-6	LED<4>3-6
Bonus	LED<2>1-3	LED<3>1-3
Bonus light		
Content	1#	2#
Score	LED<5>1-4	LED<6>1-4

TEST METHOD:

Press TEST button once, it displays segment 8.7.6.5.4.3.2.1,A,B,C,D,E,F.

Press TEST button once again, display 1, LED<1>4-1 shows DIP status.

Press TEST button again, display 2, shows switch shut off no.

Press TEST button again, display 3, press IN1,2,3, test music

ERROR DISPLAY:

1. If input signal is error when starting the game, the following error code is display.
2. Score display will show "HLP" when out off ticket.

CLEAR MEMORY: Put SW1.8 to OFF to clear memory. Be sure clear memory after machine was approved.

ERROR CODE

E01	1# hole 1 sensor	E19	2# hole 1 sensor	E10	1# Hole 10 sensor	E28	2# Hole 10 sensor
E02	1# hole 2 sensor	E20	2# hole 2 sensor	E11	1# Hole 11 sensor	E29	2# Hole 11 sensor
E03	1# hole 3 sensor	E21	2# hole 3 sensor	E12	1# Hole 12 sensor	E30	2# Hole 12 sensor
E04	1# hole 4 sensor	E22	2# hole 4 sensor	E13	1# Hole 13 sensor	E31	2# Hole 13 sensor
E05	1# hole 5 sensor	E23	2# hole 5 sensor	E14	1# Move sensor error	E32	2# Move sensor error
E06	1# hole 6 sensor	E24	2# hole 6 sensor	E15	1# Single button error	E33	2# Single button error
E07	1# hole 7 sensor	E25	2# hole 7 sensor	E16	1# Double button error	E34	2# Double button error
E08	1# hole 8 sensor	E26	2# hole 8 sensor	E17	1# Ball sensor	E35	2# Ball sensor
E09	1# hole 9 sensor	E27	2# hole 9 sensor	E18	1# Service button	E36	2# Service button

7. ERROR MESSAGE AND RECOVERY

7.1 Problem Analysis and Solution

*Please confirm whether every connector connected tightly.

Problem	Cause	Countermeasures
Machine no response after power on.	Power is not supplied.	Please check power supply suitable for the machine or not.
	Leakage SW protection.	Check leakage SW break or not, if break you should restart.
	Fuse is burnt out	Replace with a proper fuse.
Power dump	Circuit protector action, power supply SW cut off.(Note: Circuit protector will cut off current when abnormal current flow.)	Please connect power SW again. If circuit protector action again and again, it is say that machine is abnormal. Please connect to outlet,
Coin mech. no response	Coin mech. failure.	Replace coin mech.
	Coin mech, signal cable is loose.	Check signal cable loosen or not.
	No DC12V.	Replace SW voltage.
	IO control PCB failure.	Replace IO control PCB.
	Coin mech is failure.	Change to a new coin mech.
Speaker no sound.	Volume setting too low.	Please set volume again.
	Connector falls off.	Please plug into connector firmly.
	PCB failure.	Replace PCB.
	Speaker failure.	Replace failure.

7.2 Coin Mech. Instruction

1. Spec.:

Applicable coins diameter: 21mm ~28mm; Apply thickness of coins: 1.7mm ~2.0mm

Operating voltage: DC +12V; Operating temperature: -15°C ~+75°C

2.Usage:

a. Insert coins into groove you need.

b. Cooperate the need with machine of receive signal to inset coins. Changing-over three time switches—fast, medium, and slow, but the “medium” is the factory settings.

c. VR knob is to adjust the coins 'sensitivity, clockwise (+) to spin is loose, otherwise, tight.

Adjust VR knob according to any kinds of coin, no coin or less coin, towards to (+), otherwise, towards to(-).

8. MAINTENANCE & INSPECTION

8.1 Safety Check

Check the points listed before operating the machine. These checks are necessary for safe machine operation:

1. Try to run the game before operation each day.
2. Conduct monthly routine checks of game components ensure good working condition
3. Check the machine regularly for dust and clean when necessary.

Note: Parts and components require preventative maintenance to be kept running smoothly

8.2 Handling Precautions

When installing or inspecting the machine, be very careful of the following points and pay attention to ensure that the player can enjoy the game safely.

Non-compliance with the following points or inappropriate handling running counter to the cautionary matters herein stated can cause personal injury or damage to the machine



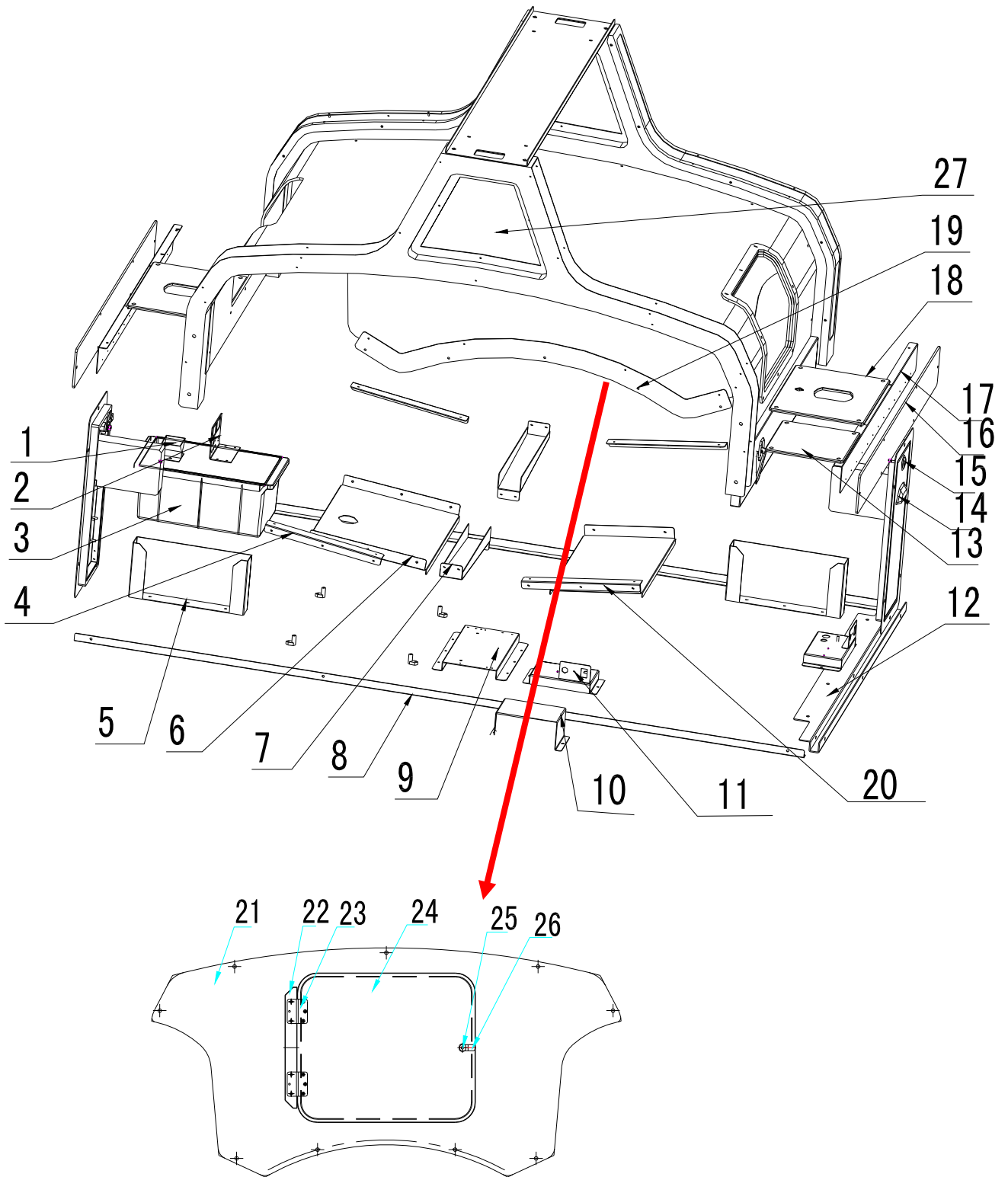
WARNING

- Before servicing the machine, be sure to turn power off. Servicing without turning the power off can cause electric shock or short circuit.
- To avoid electric shock or short circuit, do not plug then unplug the power quickly
- Do not expose power cords and earth wires, these are susceptible to damage.
- Damaged cords and wires can cause electric shock or short circuit and should be replaced immediately.
- When or after installing the product, avoid pulling the power cord to prevent unnecessary wear and tear. Use the power button to disconnect power.
- In case the power cord is damaged, ask for replacement through where the product was purchased from or replace locally. Continued usage of damaged cord can cause fire, electric shock or leakage.
- Perform grounding appropriately. Inappropriate grounding can cause electric shock.
- Use fuses that meet specified rating. Fuses exceeding can cause an electric shock.
- Should a problem occur, turn off the power immediately and stop operating the machine. Unplug the power cord of the service outlet. Operating the machine without correcting the problem may cause a fire or injuries.
- Insert the power plug securely into the outlet. Poor contact may cause overheating, resulting in fire or burns.
- To ensure the warning labels attached on the machine are visible and legible, install the machine in a well-lit location, and keep the labels clean at all times. Make sure the labels are not hidden behind other game machines.

9. OVERALL CONSTRUCTION

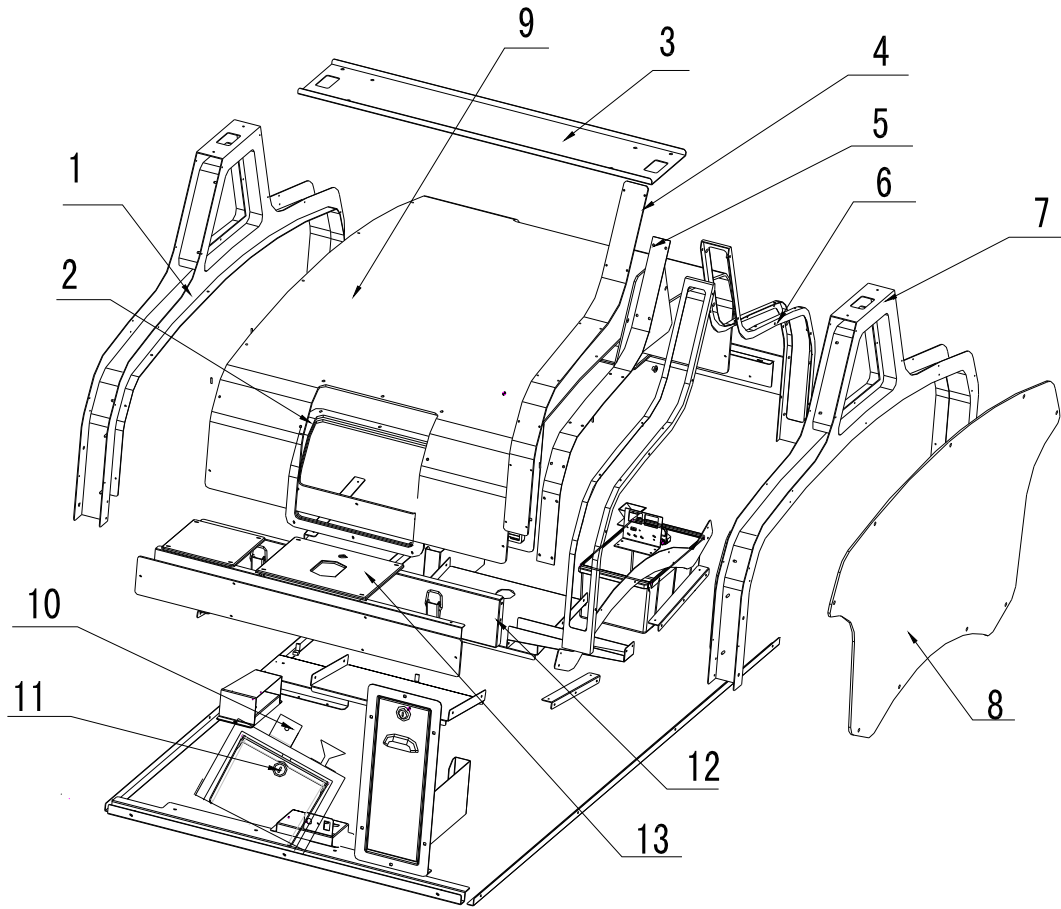
9.1 Mechanical Part

9.1.1 Assembly 1



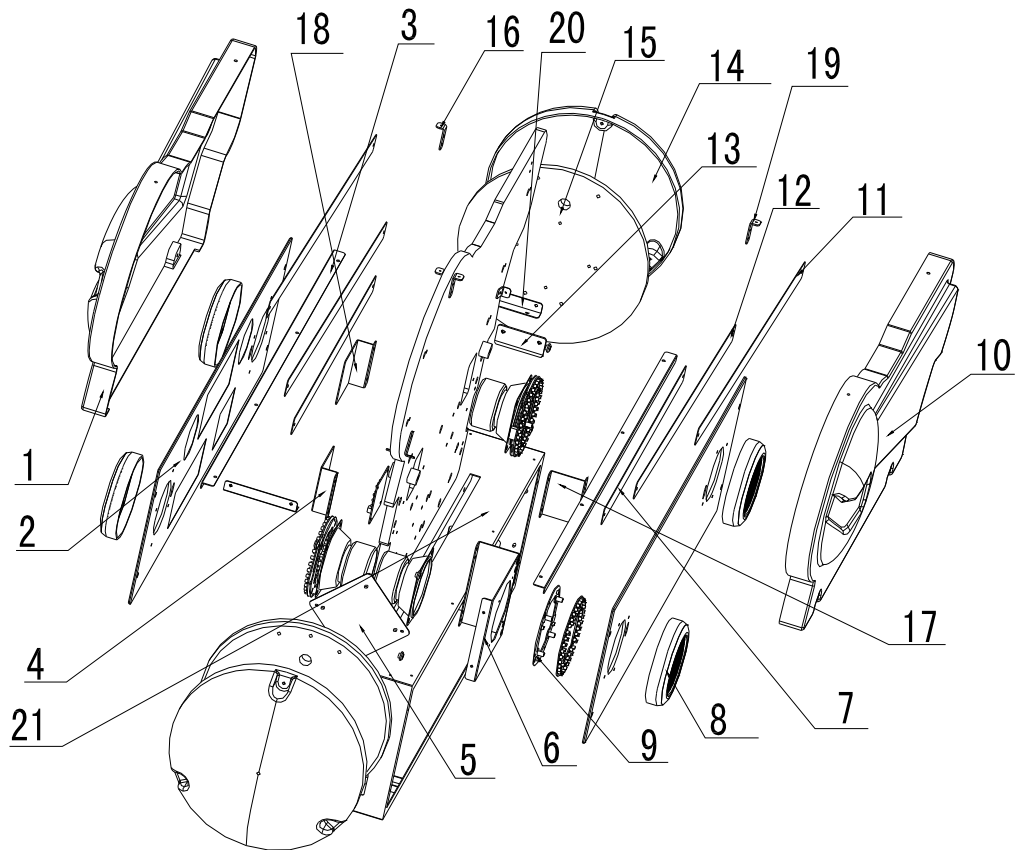
No.	Part No.	Code	Name	Spec.	Qty
1	B121-118-000	20211410008	Funnel	Q235	2
2	B121-616-000	26000002000	Meter mounting plate A	Q235	1
3	B121-626-000	26000062000	Inner coin box	Black ABS	2
4	B121-120-000	20211410010	Goalie support plate	Metal	4
5	B121-617-000	26000007000	Ticket box 120	Q235	2
6	B121-138-000	20211410026	Send ball support plate A	Metal	1
7	B121-121-000	20211410011	Sides ball plate	Q235	2
8	B121-126-000	20211410012	Protection edge A	Q235	2
9	B121-615-000	26000001000	SW power support base	Metal	1
10	B121-116-000	20611410006	Power base protection cover	PVC	1
11	B121-115-000	20211410006	SW power base	Metal	1
12	B121-127-000	20211410013	Protection edge B	Q235	2
13	B121-114-000	20611410005	Convert score platen	Plexi.	2
14	B121-620-000	26000018000	Single ticket door	组合件	2
15	B121-450-000	25300171001	Lock	171	7
16	B121-701-000	20511410001	Control panel front decal	Plexi.	2
17	B121-117-000	20211410007	Control panel front light PCB	Metal	2
18	B121-702-000	20511410002	Control panel upper plexi.	Plexi.	2
19	B121-108-000	20211410003	Sides plexi. mounted plate	Q235	2
20	B121-139-000	20211410027	Send ball support plate B	Metal	1
21	B121-611-000	20611410033	L side plexi.	Plexi.	1
22	B121-612-000	20611410034	Hinge pad	Plexi.	1
23	B121-454-000	26300000004	Hinge	2.5" stainless steel	2
24	B121-613-000	20611410035	Side door	Plexi.	1
25	B121-450-000	25300171001	Lock	171	7
26	B121-614-000	20611410036	Side door lock pin	201	1
27	B121-112-000	20611410004	Small plexi.	Plexi.	2

9.1.2 Assembly 2



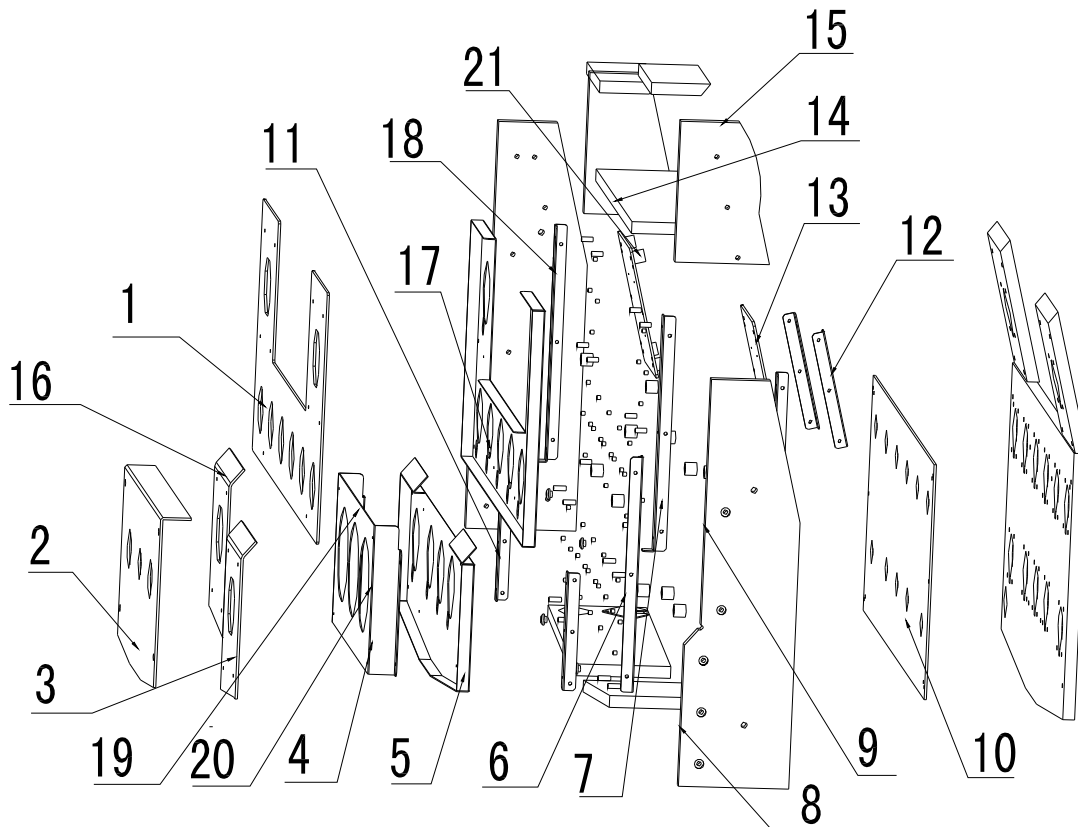
No.	Part No.	Code	Name	Spec.	Qty
1	B121-104-000	20211410078	L side support bracket	Q235	1
2	B121-123-000	20611410008	Net protection		2
3	B121-107-000	20211410002	Marquee mounted base	Q235	1
4	B121-109-000	20211410004	Sides support bracket cover plate	Q235	4
5	B121-110-000	20611410002	Sides support bracket plexi.	Plexi.	4
6	B121-111-000	20611410003	Support bracket inner light bar plexi.	PVC	4
7	B121-105-000	20211410001	R side support bracket	Q235	1
8	B121-106-000	20611410001	R side plexi.	Plexi.	1
9	B121-122-000	20611410007	Top cover plexi.	Plexi.	1
10	B121-113-000	20211410005	Small control panel	Metal	1
11	B121-451-000	25300172001	Lock	171B	2
12	B121-119-000	20211410009	L&R connection plate	Metal	2
13	B121-129-000	20211410015	Control panel	Q235	2

9.1.3 Assembly 3



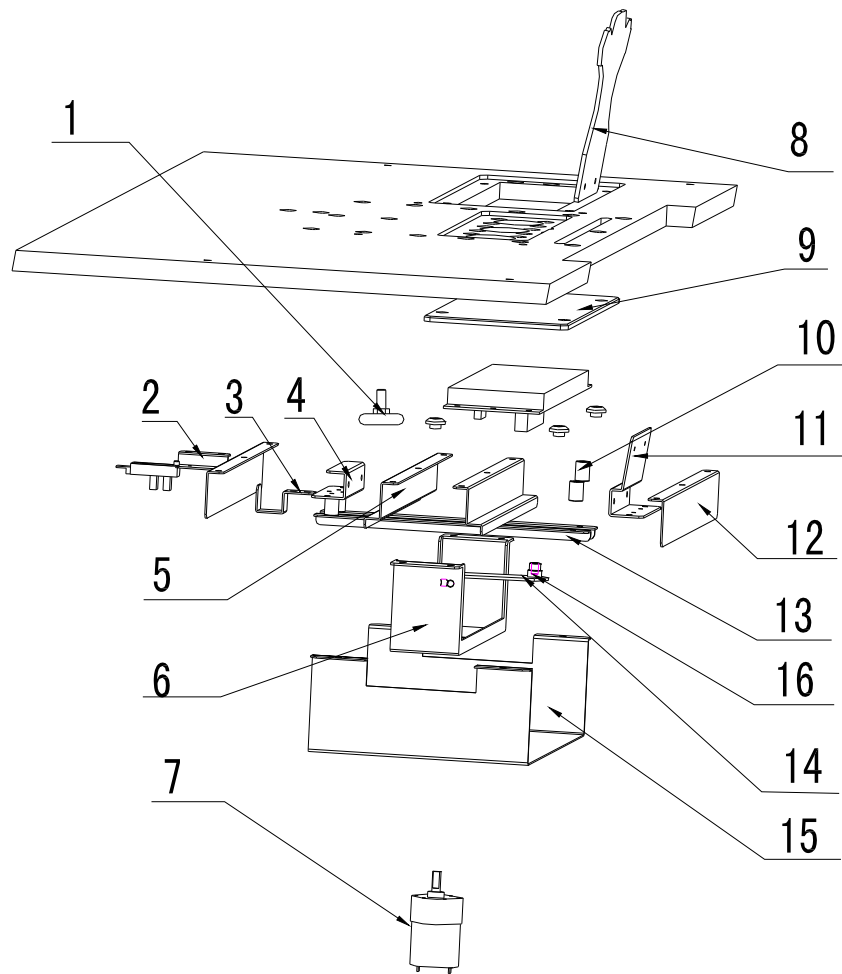
No.	Part No.	Code	Name	Spec.	Qty
1	B121-705-000	20511410005	L marquee	Plexi.	1
2	B121-704-000	20511410004	Score decal plexi.	Plexi.	2
3	B121-197-000	20211410069	Panel platen	Q235	2
4	B121-608-000	20211410076	Marquee inner light PCB support bracket B	Metal	2
5	B121-609-000	20211410077	Sides light PCB support bracket	Metal	2
6	B121-604-000	20211410072	Speaker support bracket	Metal	4
7	B121-603-000	20611410031	Light bar base plate C	PVC	2
8	B121-623-000	26000057001	Speaker net light cover	PC	4
9	B121-624-000	26000057002	Speaker net light bracket	Metal	4
10	B121-706-000	20511410006	R marquee	Plexi.	1
11	B121-601-000	20611410029	Light bar base plate A	PVC	2
12	B121-602-000	20611410030	Light bar base plate B	PVC	2
13	B121-198-000	20211410070	Soccer marquee fixed plate	Q235	2
14	B121-707-000	20511410007	Soccer vacuum foam	Plexi.	2
15	B121-522-000	20311410024	Soccer base plate	MDF	2
16	B121-605-000	20211410073	Marquee inner bracket A	Metal	4
17	B121-196-000	20211410068	Digital support bracket	Metal	12
18	B121-607-000	20211410075	Marquee inner light PCB support bracket A	Metal	2
19	B121-606-000	20211410074	Marquee inner bracket B	Metal	4
20	B121-199-000	20211410071	Marquee fixed plug PCB	Metal	2
21	B121-195-000	20211410067	Out marquee	Q235	1

9.1.4 Assembly 4



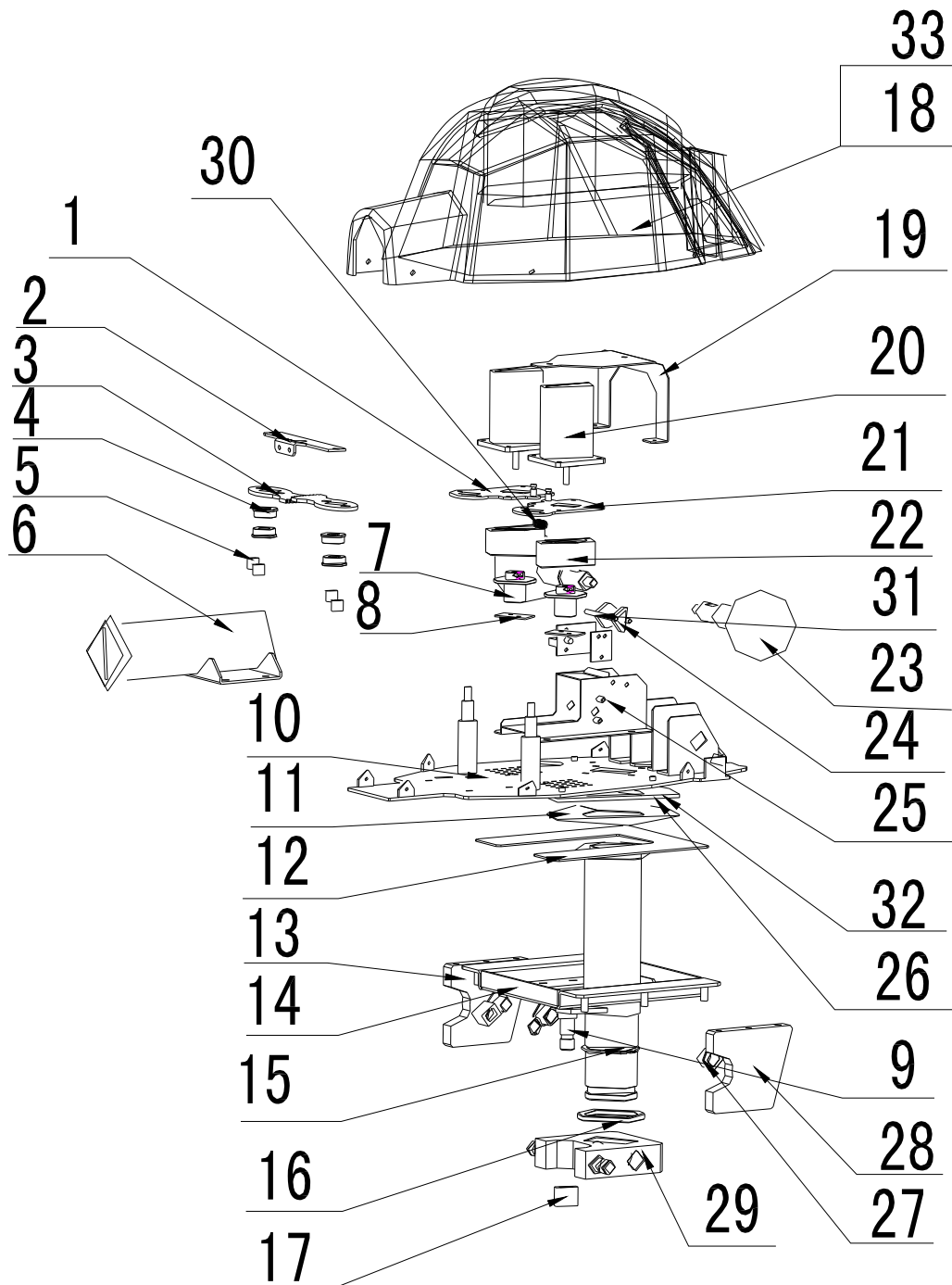
No.	Part No.	Code	Name	Spec.	Qty
1	B121-710-000	20511410010	Up score board decal	PC	2
2	B121-713-000	20511410013	Target score plexi.	PC	2
3	B121-712-000	20511410012	L down score plexi. decal	PC	2
4	B121-185-000	20211410063	Middle score base plate	Q235	2
5	B121-184-000	20211410062	Down score base plate	Metal	2
6	B121-186-000	20211410064	Long L support bracket	Metal	2
7	B121-181-000	20211410060	Inner plate long support bracket	Metal	4
8	B121-191-000	20611410025	Buffer bar C	Foam	8
9	B121-192-000	20611410026	Buffer bar D	Foam	8
10	B121-714-000	20511410014	Target decal A	PC	2
11	B121-188-000	20211410066	Outer plate short support bracket	Metal	4
12	B121-182-000	20211410061	Inner plate short support bracket	Metal	8
13	B121-715-000	20511410015	Target decal B	PC	4
14	B121-193-000	20611410027	Buffer bar E	Foam	2
15	B121-194-000	20611410028	Buffer bar F	Foam	4
16	B121-711-000	20511410011	R down score plexi. decal	PC	2
17	B121-180-000	20211410059	Upper score base plate	Metal	2
18	B121-187-000	20211410065	Long R support bracket	Metal	2
19	B121-190-000	20611410024	Buffer bar B	Foam	4
20	B121-189-000	20611410023	Buffer bar A	Foam	4
21	B121-183-000	20611410022	Inner pad	Flexurane	32

9.1.5 Assembly 5



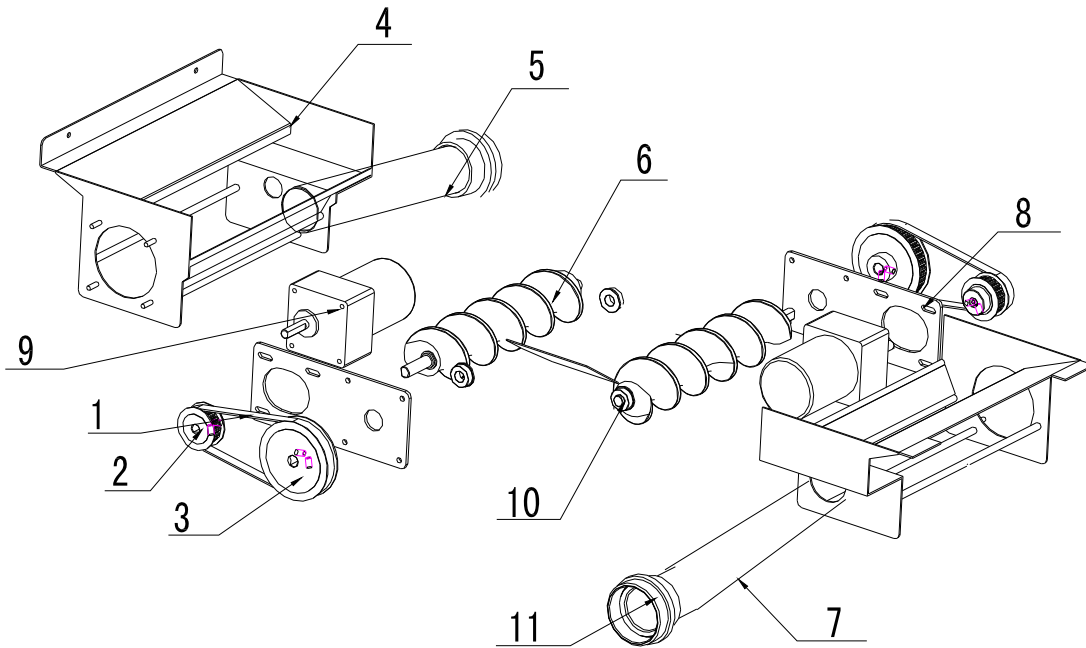
No.	Part No.	Code	Name	Spec.	Qty
1	B121-440-000	20106100137	Nylon Br. wheel		16
2	B121-178-000	20211410057	Sensor fixed plate	Metal	2
3	B121-179-000	20211410058	Batter plate	Metal	2
4	B121-173-000	20211410053	Down wheel stand	Metal	2
5	B121-171-000	20211410051	Down slide rail groove	Metal	4
6	B121-176-000	20211410055	Small motor base	Q235	2
7	B121-442-000	23404000045	Reduce DC motor		2
8	B121-708-000	20511410008	Goalie plexi, decal	PC	2
9	B121-709-000	20511410009	Target score decal	Plexi.	2
10	B121-175-000	20611410020	Slide groove pad	White nylon	8
11	B121-172-000	20211410052	Upper wheel stand	Metal	2
12	B121-170-000	20211410050	Upper slide rail groove	Metal	4
13	B121-174-000	20211410054	Crank rail groove	Metal	4
14	B121-177-000	20211410056	Eccentric shaft	Q235	2
15	B121-180-000	20611410021	Goalie protection cover	PVC	2
16	B121-437-000	20106000291	Deep groove ball br.		2

9.1.6 Assembly 6



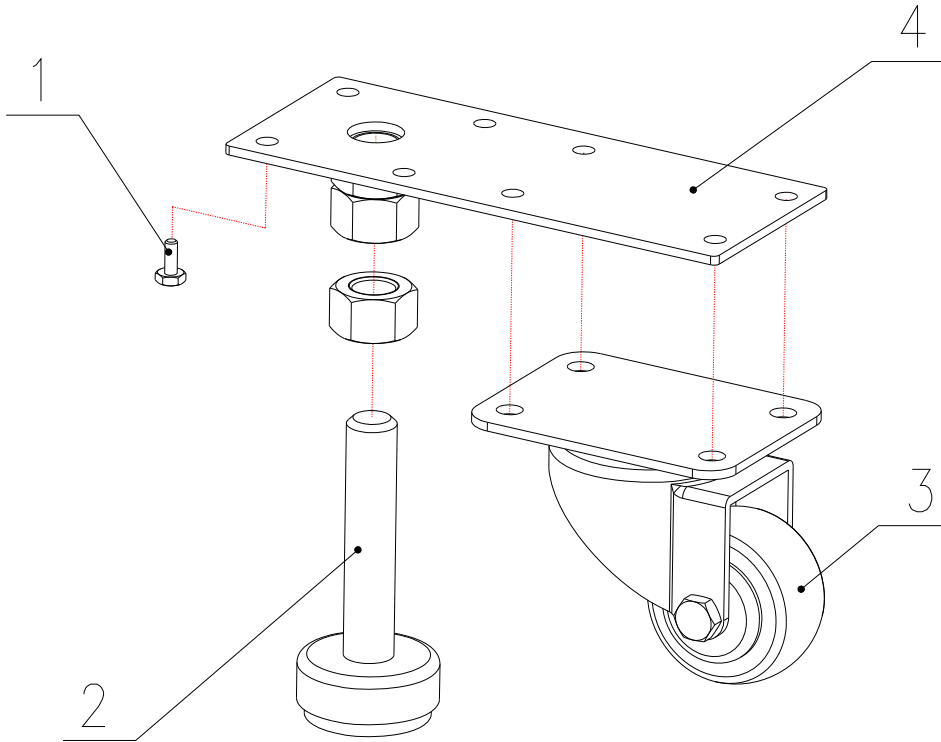
No.	Part No.	Code	Name	Spec.	Qty
1	B121-142-000	20211410030	L motor mounted plate	201	2
2	B121-148-000	20211410035	Rubber castor leveller	201	2
3	B121-147-000	20211410034	Rubber castor leveler toothed plate	201	4
4	B121-438-000	20106000320	Flange br.		12
5	B121-143-000	20611410011	Nylon platen pad	White nylon	8
6	B121-160-000	20211410046	Gun barrel	Q235	2
7	B121-144-000	20211410031	Rubber wheel hub	Aluminium alloy	4
8	B121-146-000	20211410033	Rubber wheel platen	Metal	4
9	B121-164-000	20211410047	Loss weight spring	65Mn	4
10	B121-140-000	20211410028	Gun base	Q235	2
11	B121-167-000	20611410017	Prevent stick plexi. B	PC	2
12	B121-165-000	20211410048	Anti-pinch support plate	201	2
13	B121-156-000	20211410043	Fixed L plate	Q235	2
14	B121-159-000	20211410045	Gun bottom fixed plate	Q235	2
15	B121-153-000	20211410040	Upper ball tube	45#	2
16	B121-158-000	20211410044	Balk ring	H62 brass	2
17	B121-157-000	20611410012	Location sleeve	Flexurane	6
18	B121-162-000	20611410014	Gun shell A	Yellow ABS	1
19	B121-145-000	20211410032	Gun light PCB support bracket	Metal	2
20	B121-443-000	23404000212	Motor 1		4
21	B121-141-000	20211410029	R motor mounted plate	201	2
22	B121-101-000	20611407004	Spiral wheel	Silica gel	4
23	B121-158-000	20611410019	Gun handle	PU	4
24	B121-152-000	20211410039	Rotor	Black	2
25	B121-150-000	20211410037	Ball out detect frame	201	2
26	B121-166-000	20611410016	Prevent stick plexi. A	Black PP	2
27	B121-439-000	20106090133	Barrel-type br. with flange	H62	4
28	B121-155-000	20211410042	Fixed R plate	Q235	2
29	B121-154-000	20211410041	L&R limit plate	Q235	2
30	B121-149-000	20211410036	Motor spring	65Mn	2
31	B121-151-000	20211410038	Rotor spindle	201	4
32	B121-168-000	20611410018	Prevent stick plexi. C	Black PP	2
33	B121-610-000	20611410032	Gun shell B	Blue ABS	1

9.1.7 Assembly 7



No.	Part No.	Code	Name	Spec.	Qty
1	B121-457-000	26504000111	Push ball synchronous belt		2
2	B121-134-000	20211410022	Driver wheel	Aluminium alloy	2
3	B121-133-000	20211410021	Driven wheel	Aluminium alloy	2
4	B121-131-000	29911410009	Catch ball disk	Welding	1
5	B121-135-000	20211410023	Ball tube A		1
6	B121-103-000	20611407015	Nylon worm	White nylon	2
7	B121-136-000	20211410024	Ball tube B		1
8	B121-132-000	20211410020	Motor mounted plate	Q235	2
9	B121-444-000	23404000213	Motor 2		2
10	B121-441-000	20113100058	Ripple washer	Spring steel	10
11	B121-137-000	20211410025	Sleeve fixed washer		2

9.1.8 Assembly 8

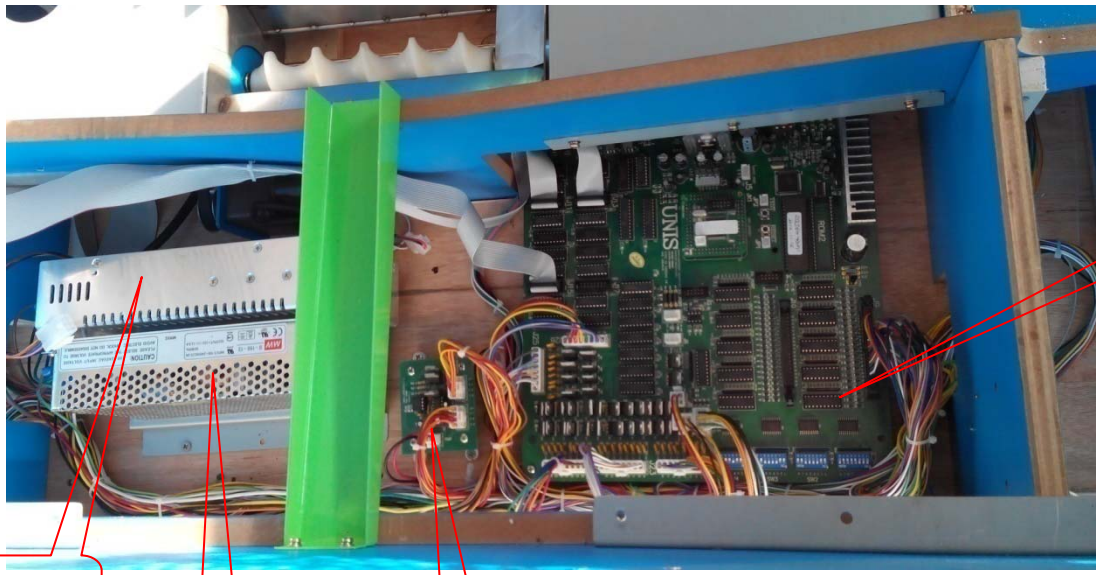


No.	Part No.	Code	Name	Spec.	Qty
1	B121-345-000	20104020003	Cross recessed hexagon head suite bolt	Q235	8
2	B121-618-000	26000008000	Leveller	Q235	4
3	B121-452-000	25501000056	Castor	3-2689-52	4
4	B121-619-000	26000010000	Castor support bracket	Q235	4

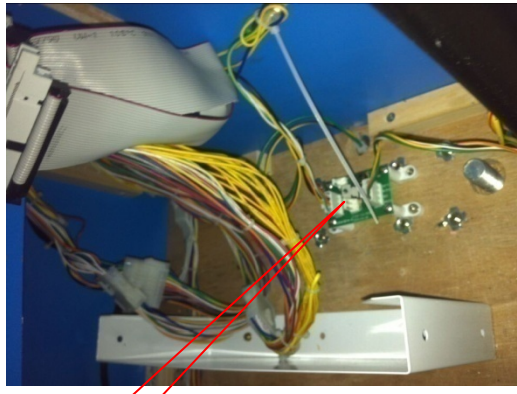
9.2 Electrical Part



No.	Part No.	Code	Name	Qty
1	B121-423-000	22002013003	LED light strip	4.8
2	B121-407-000	29710811001	Marquee ball light PCB	30
3	B121-401-000	29751301003	Speaker light PCB	4
4	B121-431-000	21706000034	Score digital	4
5	B121-429-000	21706000061	Bonus PCB	2
6	B121-430-000	21706000047	Time digital	2
7	B121-406-000	29711407002	Target sensor 2(red)	9
8	B121-404-000	29711407004	Target sensor 2(green)	7
9	B121-405-000	29711407003	Target sensor 2(yellow)	5
10	B121-403-000	29711407005	Target sensor 2(blue)	9
11	B121-424-000	22002013002	Sides RGB light strip	3.4
12	B121-424-000	22002013002	Sides RGB light strip	3.4
13	B121-422-000	20710805003	Soccer LED PCB	2
14	B121-423-000	22002013003	LED light strip	4.8
15	B121-416-000	22401000005	Large button	4
16	B121-418-000	22604000006	Micro SW	4
17	B121-421-000	22003000018	LED bulb	4
18	B121-409-000	23100000005	Tik. dispenser	2
19	B121-420-000	22003000075	Red light with base	2
20	B121-417-000	22301000001	Coin mech.	2
21	B121-411-000	22801000005	Speaker	4



- 1: Points to the main green PCB.
- 2: Points to the green vertical component.
- 3: Points to a small green PCB on the main board.
- 14: Points to the white motor driver board.



- 8: Points to the green PCB connected to the motor.



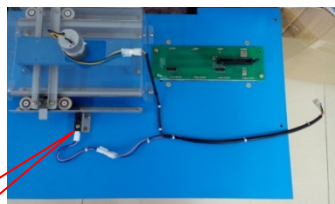
- 4: Points to the right digital display.
- 5: Points to the right potentiometer.
- 6: Points to the right BNC connector.
- 7: Points to the left potentiometer.



- 9: Points to the blue USB cable.
- 10: Points to the motor driver board.
- 11: Points to the black potentiometer.
- 12: Points to the yellow cable.
- 13: Points to the green cable.



- 15: Points to the black cable.



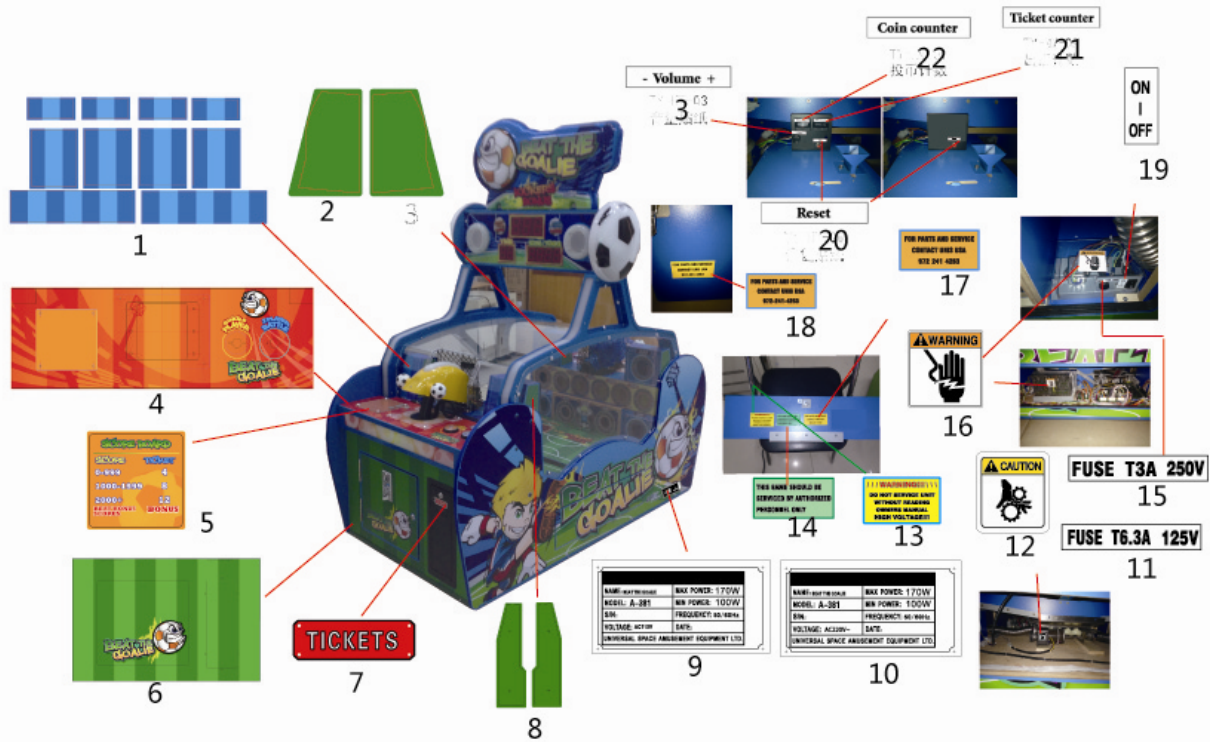
- 16: Points to the PCB and motor assembly.

No.	Part No.	Code	Name	Qty
1	B121-432-000	21701000014	Main board	1
2	B121-434-000	21602000094	12V power supply	1
3	B121-402-000	29740917006	PCB	1
4	B121-410-000	23000000005	Meter	2
5	B121-415-000	22402010002	Button	2
6	B121-413-000	22501000017	POT	1
7	B121-414-000	22403000001	POT knob	1
	B121-428-000	21709000002	POT connection plate	1
8	B121-427-000	21712000001	Tik. Dispenser convert PCB	2
9	B121-436-000	23309000173	Wiring	1
10	B121-426-000	232000008	3A filter AIFW	1
11	B121-412-000	22601000005	Small rocket SW	1
12	B121-465-000	21901000015	Fuse	1
13	B121-425-000	21902000006	Fuse base	1
14	B121-433-000	21602000095	Power supply	1
15	B121-408-000	23301010020	Power cord	1
16	B121-435-000	21503000046	Photo-sensor	2

9.3 Decal Part

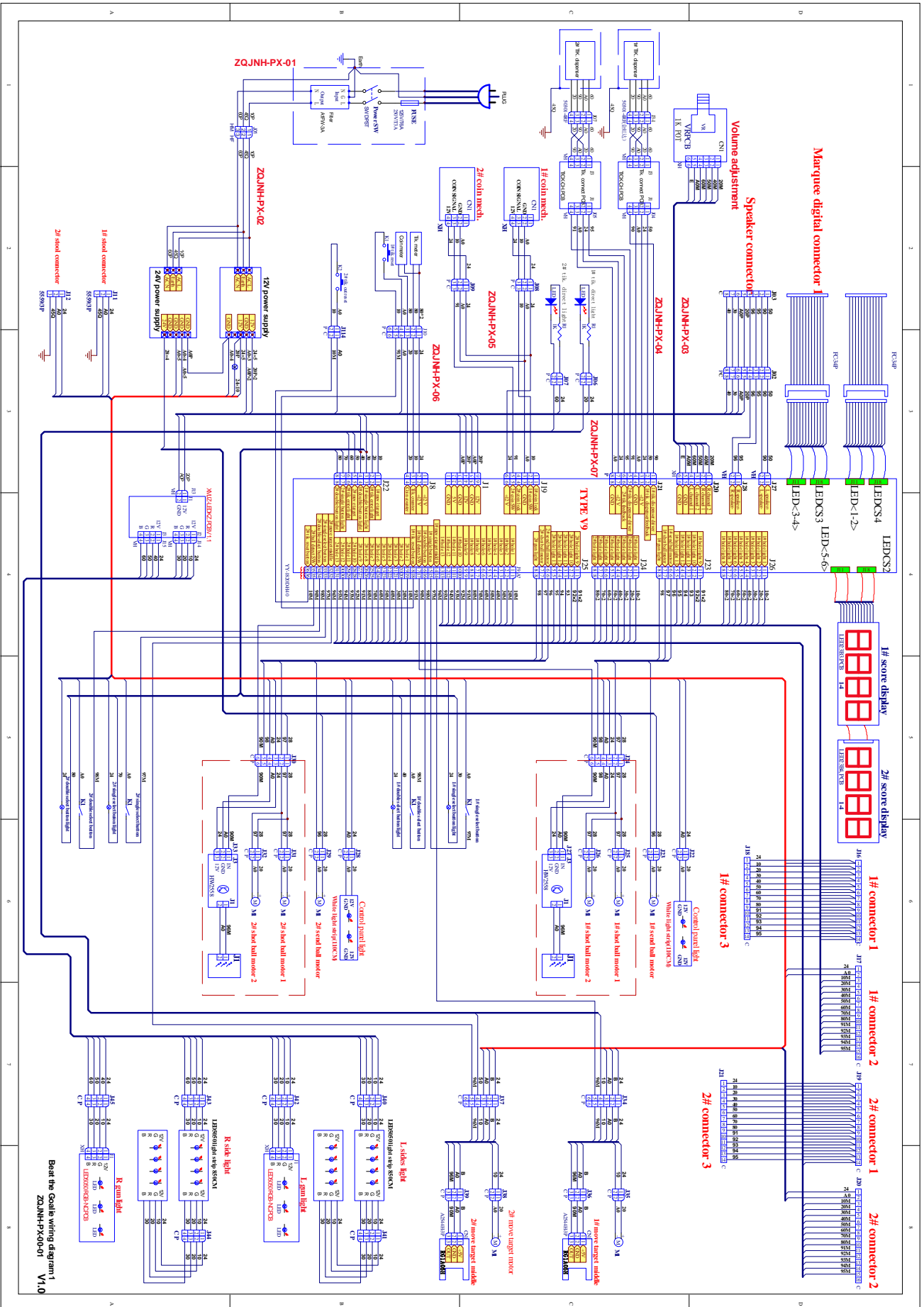


No.	Part No.	Code	Name	Qty
1	B121-705-000	20511410005	L marquee	1
2	B121-706-000	20511410006	R marquee	1
3	B121-704-000	20511410004	Score decal plexi.	2
4	B121-713-000	20511410013	Target score plexi.	2
5	B121-712-000	20511410012	L down score plexi. Decal	2
6	B121-711-000	20511410011	R down score plexi. Decal	2
7	B121-702-000	20511410002	Control panel upper plexi.	2
8	B121-701-000	20511410001	Control panel front decal	2
9	B121-718-000	20511410018	P1P2 label	1
10	B121-717-000	20511410017	Button decal	2
11	B121-703-000	20511410003	Active plexi.	2
12	B121-708-000	20511410008	Goalie plexi, decal	2
13	B121-716-000	20511410016	Sides decal	2
14	B121-709-000	20511410009	Target score decal	2
15	B121-715-000	20511410015	Target decal B	4
16	B121-714-000	20511410014	Target decal A	2
17	B121-710-000	20511410010	Up score board decal	2
18	B121-707-000	20511410007	Soccer vacuum foam	2

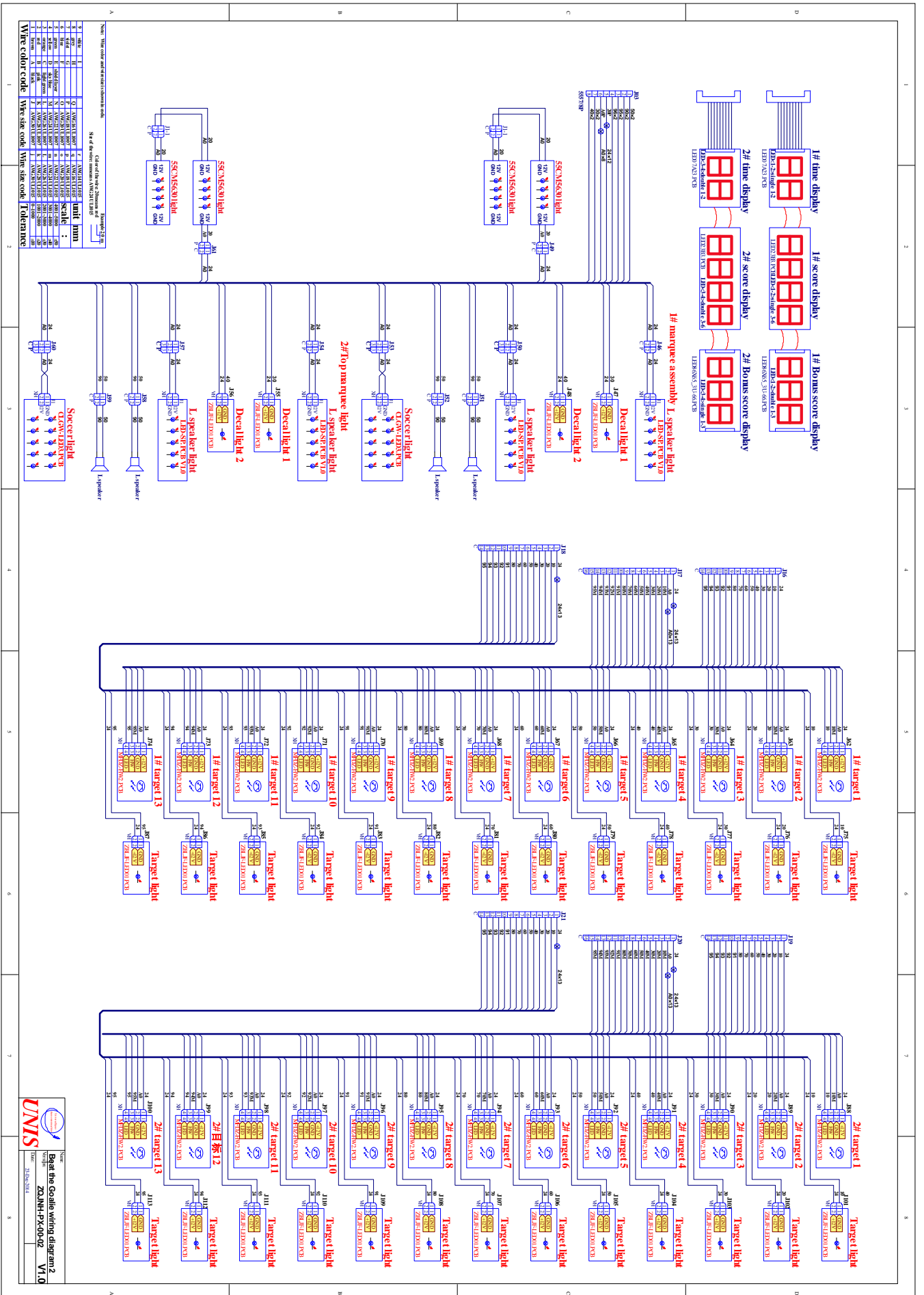


No.	Part No.	Code	Name	Qty
1	B121-723-000	20511410023	Score box top decal	1
2	B121-720-000	20511410020	Score box inner side decal	2
3	B121-729-000	25600000003	Volume label	1
4	B121-722-000	20511410022	Control panel decal	2
5	B121-721-000	20511410021	Control panel score decal	2
6	B121-724-000	20511410024	Front door decal	2
7	B121-732-000	25600000034	Tickets label	2
8	B121-719-000	20511410019	Score box sides decal	2
9	B121-725-000	20511410025	English non-certification 110V nameplate	1
10	B121-726-000	20511410026	English non-certification 220V nameplate	1
11	B121-739-000	25600000082	Fuse T6.3A/125V	1
12	B121-735-000	25600000055	Pinch notice label	2
13	B121-736-000	25600000067	Service notice label	1
14	B121-734-000	25600000042	Service notice label 1	1
15	B121-737-000	25600000073	Fuse T3A/250V	1
16	B121-733-000	25600000036	High voltage warning (small)	2
17	B121-740-000	25600000095	New service label (large)	1
18	B121-741-000	25600000096	New service label (small)	1
19	B121-731-000	25600000017	Power SW label B	1
20	B121-730-000	25600000006	Reset label	2
21	B121-728-000	25600000002	Ticket counter	1
22	B121-727-000	25600000001	Coin counter	1

Wiring diagram





Beat the Goalie wiring diagram 1
ZQJNH-PX-00-01 V1.0





Have Questions? Contact us!

www.universal-space.com

 International Support Center	 USA Support Center
Tel: +1-905-477-2823 Fax: +1-905-477-2660 Email: service@universal-space.com (Contact: Clement Yau)	Tel: 972-241-4263 Fax: 214-919-4918 Email: tsnelling@unisusasupportcenter.com (Contact: Tim Snelling)